

Takeda R&D's 243-year challenge for innovation

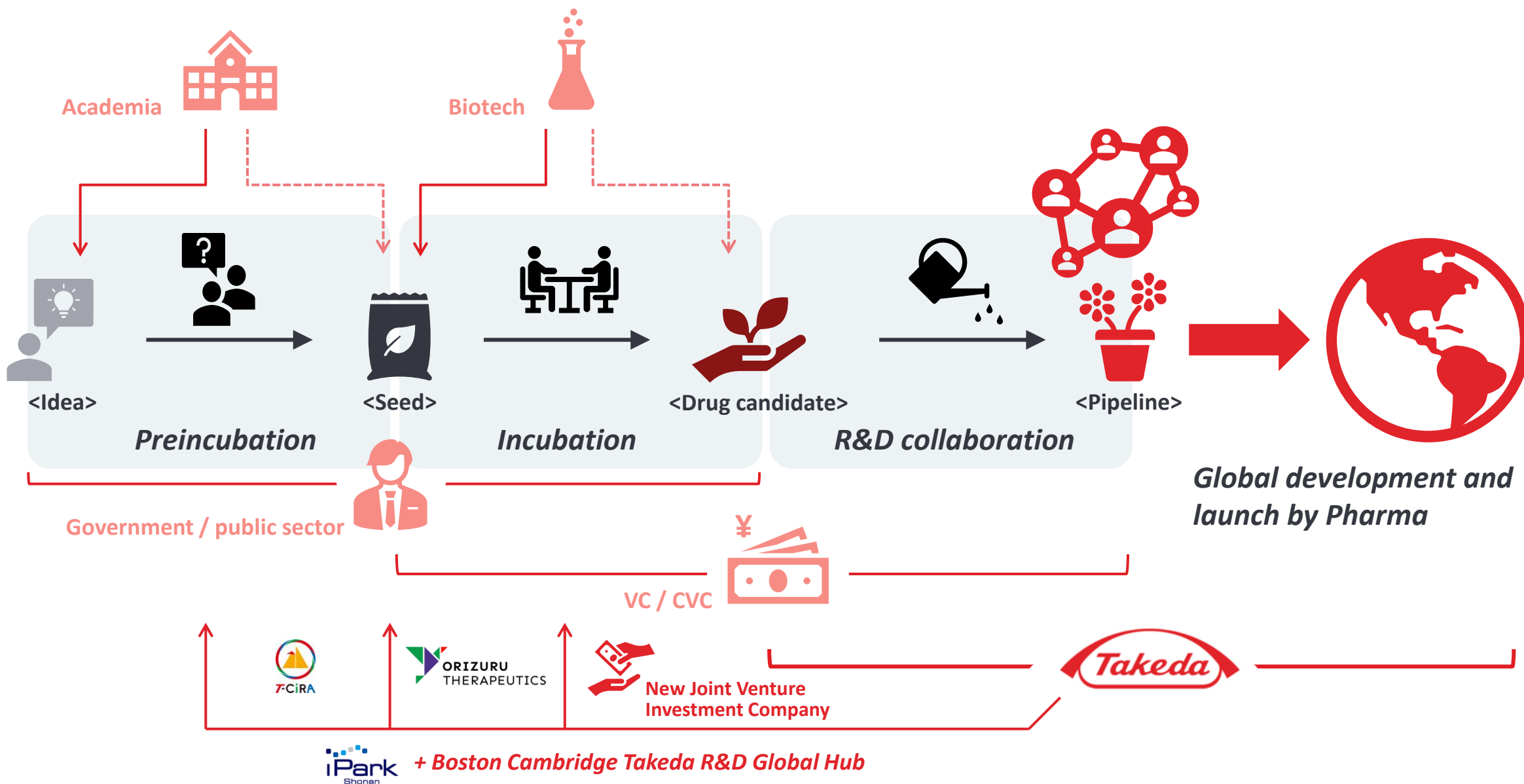
資料 2 - 2
柱 明日香様
Document 2 - 2



A thick, solid red vertical bar located on the left side of the slide.

Reference

Open innovation and its ecosystem are keys for R&D success



Takeda research sites in Japan and US are connected through Global Hub in the world-leading innovation ecosystem



Neuroscience



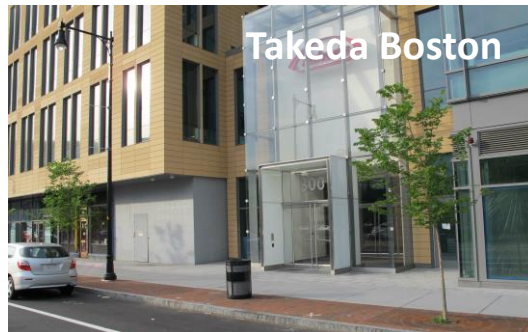
GI and Inflammation



Oncology

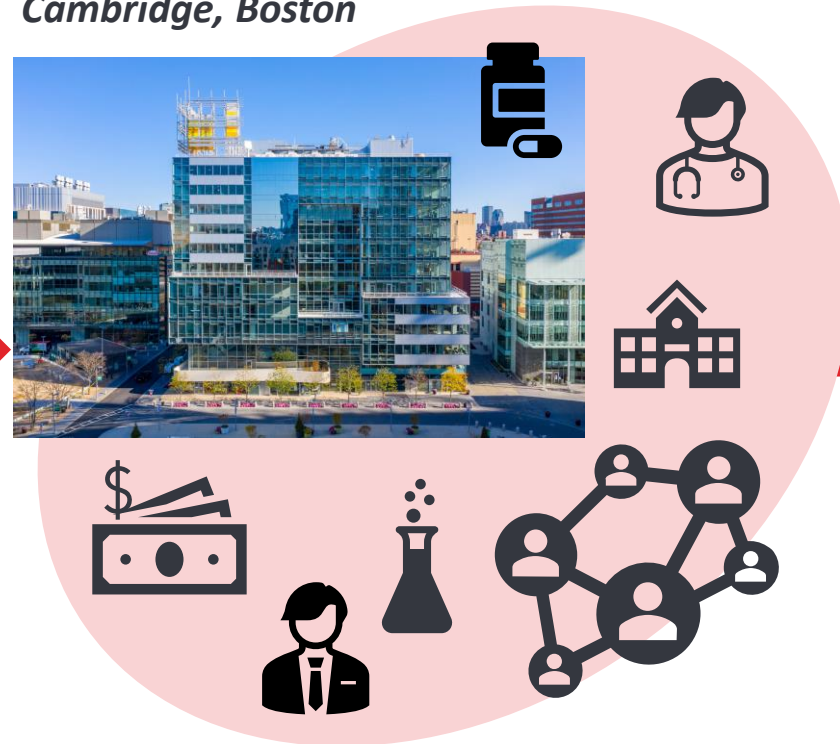


Takeda Shonan / iPark



Takeda Boston

R&D Global Hub in
Cambridge, Boston



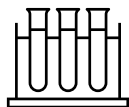
World-leading Open Innovation Ecosystem

Global trials in

US
Japan
Europe
China
Other regions



Shonan Research Center and iPark: a hub of open innovation



Shonan iPark

The first pharmaceutical-led science park now **the largest incubation center** representing Japan.



Strategic Venture Investing

Entrepreneurship Venture Program, generated **9 spin-out newcos** from Takeda.



Academic Alliances

T-CiRA program as the **Center for iPS Cell Research and Application (CiRA)** at Kyoto University.



Industry Collaboration

Partnering with local industry leaders such as **PeptiDream**.



Public Private Partnership

Establishing **Genome consortium** with **Tohoku University** and **Japan Agency for Medical Research and Development (AMED)**.



External Innovation in Japan/Asia

Search and nurture innovative academic researchers and bio-ventures through programs such as **COCKPI-T**.



A global biopharmaceutical company



GLOBAL HEADQUARTERS
TOKYO, JAPAN

GLOBAL HUB
**CAMBRIDGE,
MA, USA**

~ 25 NEW MOLECULAR
ENTITY CLINICAL
STAGE ASSETS

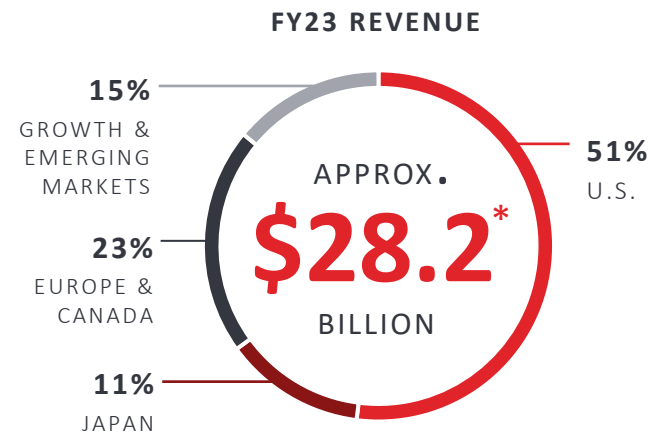
PRESENCE: APPROX. IN
80 COUNTRIES
& REGIONS

25+ MANUFACTURING
SITES

2 RESEARCH
SITES

180+
PARTNERSHIPS TO HELP
US BRING INNOVATION
TO PATIENTS

TOP EMPLOYER®
IN
24
COUNTRIES &
3 REGIONS



* Convenience translation of reported JPY figures into USD at an average rate of 151.22 JPY/USD. FY2023 revenue amount as of March 31, 2024.



FOUNDED IN
1781
OSAKA, JAPAN

**OUR
PEOPLE**

NUMBERS AS OF JUNE 2024
UNLESS OTHERWISE INDICATED