

Period IV (5) – i. Documents related to fishing surveys

Report on a fishing survey that included waters near the Senkaku Islands

No.61 Ryukyu Fisheries Research Institute Operations Report: FY1964/1965

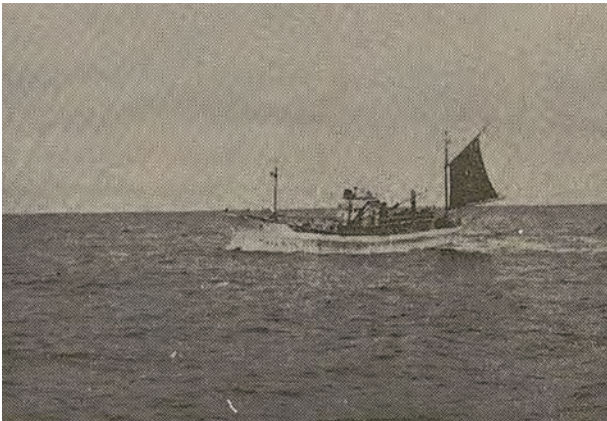
FY2015/P18 1966

Overview

These are sections of an operations report by the Ryukyu Fisheries Research Institute covering its mackerel fishing ground survey and ocean survey (surveying the mackerel pole-and-line fishing conducted in the waters west of Uotsuri Island of the Senkaku Islands in April 1964), and its fishing ground survey for deep sea pole-and-line fishing (surveying such fishing conducted in the waters west of Kume Island, near Taisho Island/Sekibi-Sho, and near Yonaguni Island in July-August 1963).

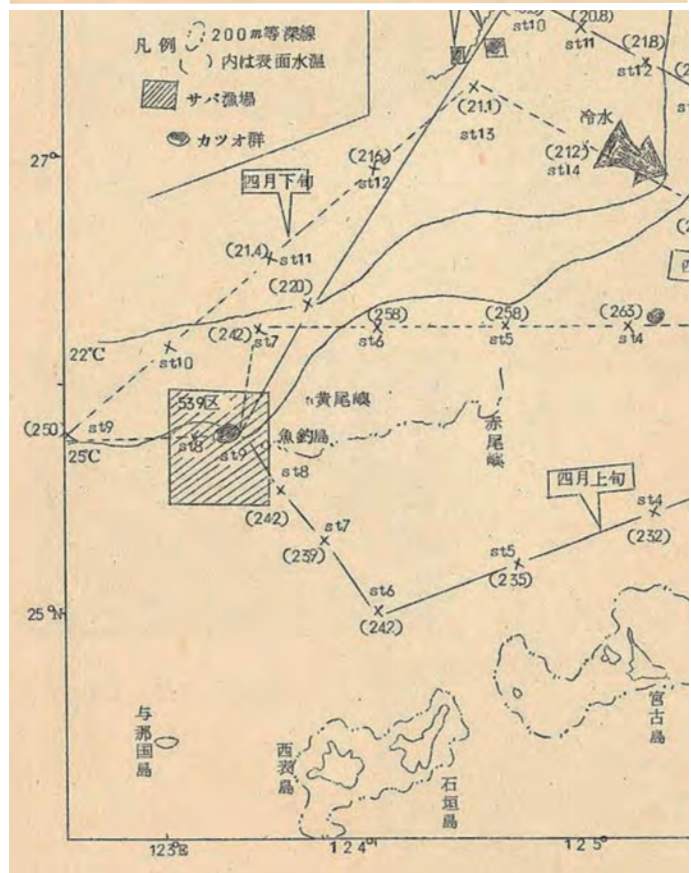
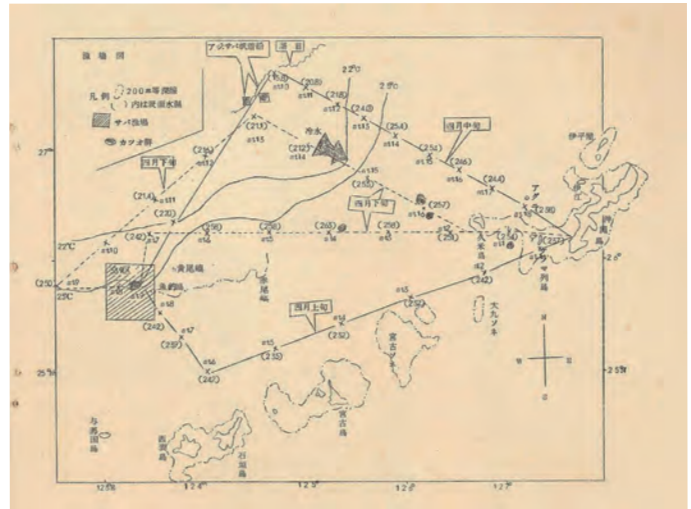
The purpose of the 1964 surveys, as reported, was to gather information on the fishing grounds in order to develop a future plan, although the mackerel fishery had already been discontinued in Okinawa. As for the deep sea pole-and-line fishing, the survey was conducted to develop new fishing grounds.

The center spread map of fishing grounds (refer to p.60 in the report) shows the status of mackerel fishing boats operating in the vicinity. A photograph is included in the report, showing a mackerel fishing ship with stick-held dip nets from the mainland, operating in the waters near the Senkaku Islands.



Mackerel stick-held dip net ship from the mainland
Repository: Okinawa Prefectural Library

Date Created	1966
Author(s) & Editor(s)	Ryukyu Fisheries Research Institute
Publisher	Ryukyu Fisheries Research Institute
Name of Publication	Operations Report (FY1964, 1965)
Language	Japanese
Medium	Paper
Public Access	Available to the public
Repository	Okinawa Prefectural Library
Reference & Information	Follow the instruction at the Okinawa Prefectural Library



Excerpt [English translation]

Mackerel fishing ground survey and ocean survey

(6) Overview of survey

Fishing grounds in Agriculture, Forestry and Fishery Zone 539, west of Uotsuri Island, are subject to a relatively fast tidal current flowing towards the east or the northeast.