

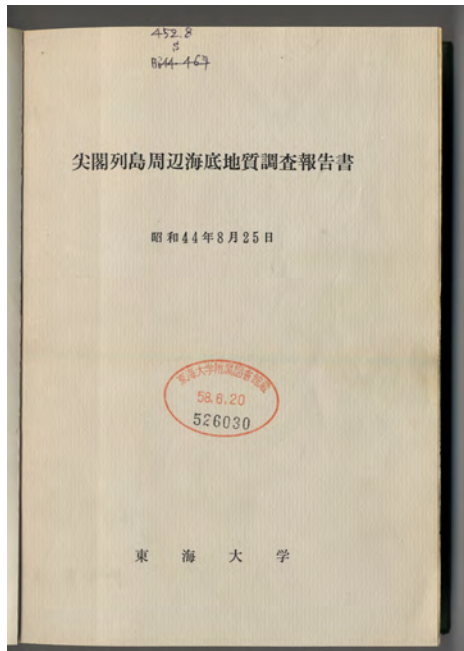
Period V

(2) – ii. Report on a geological survey of the seabed around the Senkaku Islands, commissioned by the former General Administrative Agency of the Cabinet

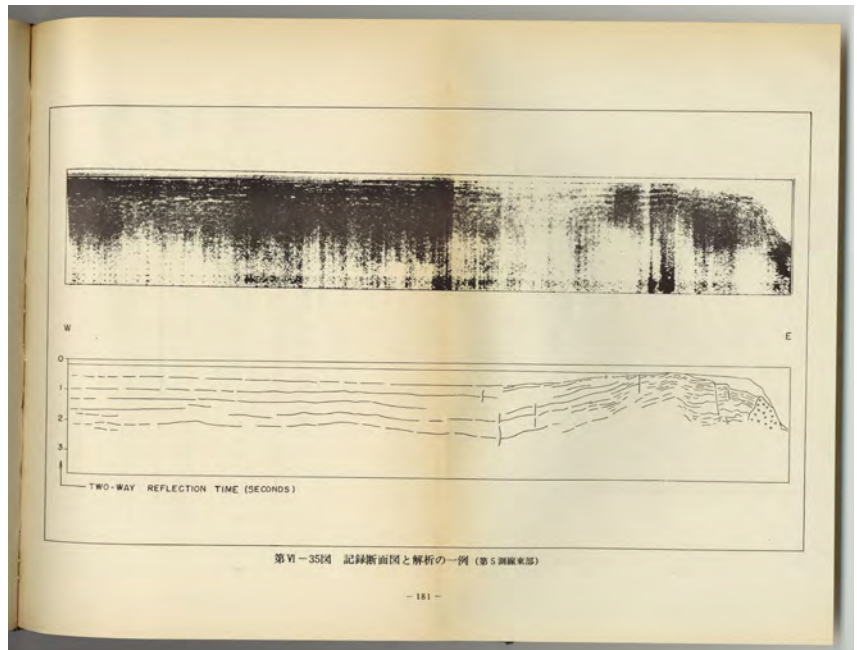
Report on a geological survey of the seabed around the Senkaku Islands conducted on three occasions

No.73 Report on a geological survey of the seabed around the Senkaku Islands

FY2018/P27 August 25, 1969



Repository: Tokai University Shimizu Library



Example of cross-section of a recording from sonic prospecting

Overview

Report on a geological survey of the seabed around the Senkaku Islands by Tokai University (School of Marine Science and Technology) from June 27 to July 8, 1969 (the period of the on-site surveys conducted in the waters adjacent to the Senkaku Islands). As a follow-up to the report drawn up by Daisuke TAKAOKA directly after his on-site survey of the Senkaku Islands in July the previous year (1968), the former General Administrative Agency of the Cabinet, the Government of Japan, commissioned Tokai University to conduct further surveys. The university conducted such surveys on three occasions.

General oceanographic observations (atmospheric temperature, water temperature, salt content, etc.), a submarine topography survey, a marine geological survey through bottom sampling and sample analysis, geomagnetic observations, and study of the geological structure of the seabed through sonic prospecting using a “sparker” were conducted. Rock samples were also collected from Uotsuri Island and Taisho Island.

Prior to the university’s on-site surveys, a reception hosted by the Government of Japan was held for members of the survey team who had entered Naha Port. Zenji KOGA, the owner of four of the Senkaku Islands (Uotsuri Island, Kuba Island, Kita-Kojima Island, and Minami-Kojima Island), was also invited to this event as a person concerned.

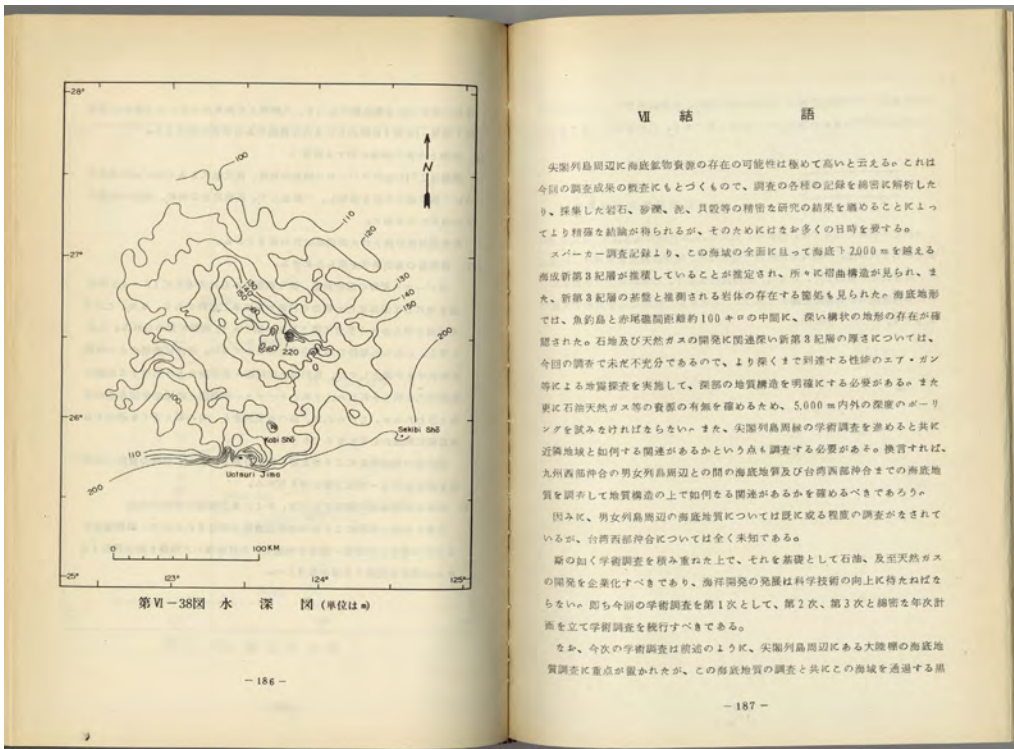
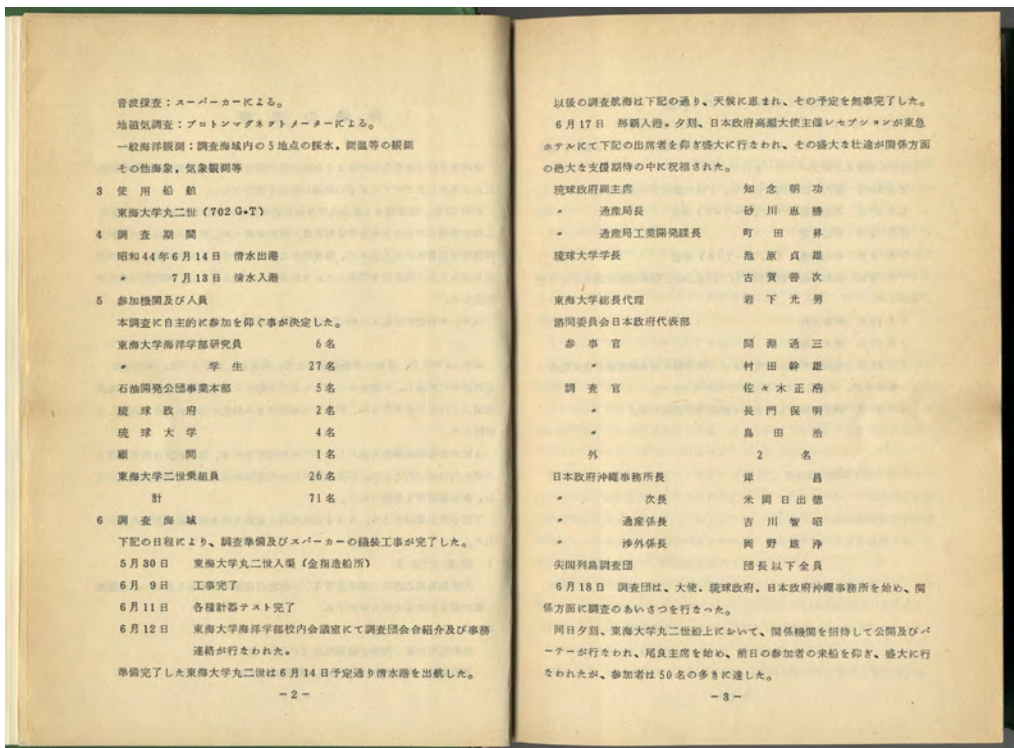
Excerpt [English translation]

VII Conclusion

There is a very strong possibility that mineral resources are present on the ocean floor in the waters around the Senkaku Islands. This is a rough estimate based on the results of this survey. More precise conclusions could be drawn by conducting a close analysis of the various records of studies, and coordinating the results of precise research conducted on the rocks, gravel, mud, shells, and other samples collected, but that would require more time.

According to the recording from the “sparker” survey, it is inferred that a marine layer from the Neogene Period is deposited more than 2,000 meters under the seabed in the entire area of these waters. Fold structures were also observed in some places, as were rock structures that are believed to be bedrock from the Neogene Period. In the submarine topography, the presence of terrain with deep grooves was observed midway at a distance of about 100 kilometers between Uotsuri Island and Sekibi-Sho (Taisho Island). With regard to the thickness of the Neogene Period layer, which is closely related to the development of natural gas and oil, this research was not adequate and there is a need to conduct seismic prospecting using air guns or other equipment with the ability to reach even deeper, in order to clarify the geological structure in the deep sections of the seabed. Furthermore, in order to confirm the presence or absence of resources such as rock (sic: read “oil”) and natural gas, it is necessary to attempt boring work at a depth of around 5,000 meters. Alongside conducting academic surveys around the Senkaku Islands, there is also a need to study what relationship this may have with the neighboring region. (text omitted)

As mentioned above, this academic survey focused on the marine geology of the continental shelf around the Senkaku Islands. (text omitted)



Repository: Tokai University Library Shimizu Library

Date Created	August 25, 1969
Author(s) & Editor(s)	Tokai University
Publisher	Tokai University
Name of Publication	-
Language	Japanese
Medium	Paper
Public Access	Available to the public
Repository	Tokai University Library Shimizu Library
Reference & Information	Available at Tokai University Library Shimizu Library