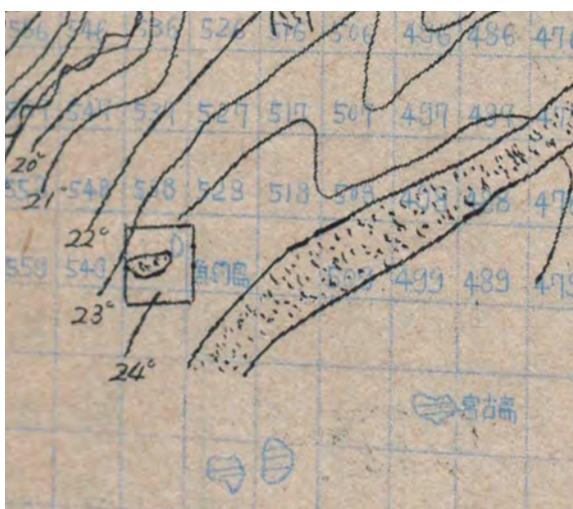


Report on a fishing survey conducted by the Kagoshima Prefecture Fisheries Research Institute

No.60 Kagoshima Prefecture Fisheries Research Institute Bulletin Volume 2: Status of operation of boats for mackerel pole-and-line fishing with luring light in the East China Sea September 1960



Repository: Kagoshima Prefecture Fisheries Research Institute

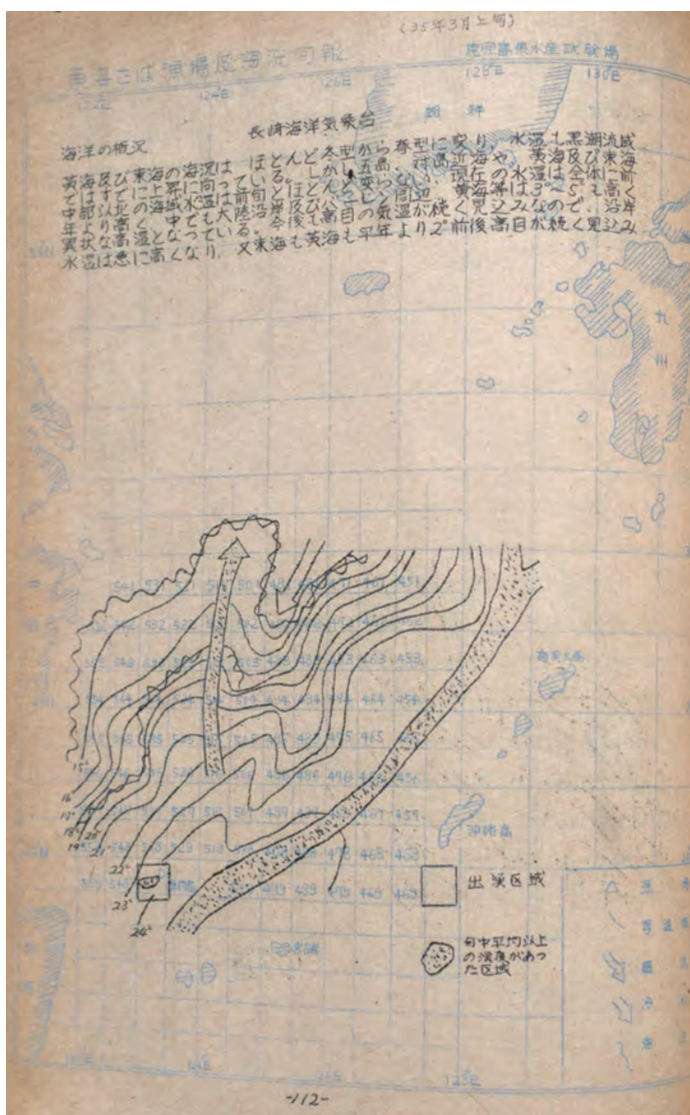
Overview

This is a report on the status of mackerel pole-and-line fishing boat operations in the East China Sea made by the Kagoshima Prefecture Fisheries Research Institute. It states that the fishing vessels were operated in the waters near Uotsuri Island (fishing area number: 529, 539, and 549) as mackerel migratory activities were concentrated there from around February 1960.

Excerpt [English translation]

Overview of the state of fishing

The average catch per boat per night for each day of a five-day operation in the fishing grounds is as shown in Fig.1. In both FY1957 and FY1958, fishing conditions peaked in November, while experiencing repeated short-term fluctuations, but this year the reverse trend has occurred; fishing grounds have stayed in the coastal waters of Uotsuri Island and have become somewhat more active there.



Date Created	September 1960
Author(s) & Editor(s)	-
Publisher	Kagoshima Prefecture Fisheries Research Institute
Name of Publication	-
Language	Japanese
Medium	Paper
Public Access	Available to the public
Repository	Fisheries Library, Kagoshima University Library (Local materials)
Reference& Information	Follow the instruction at the Fisheries Library of Kagoshima University Library