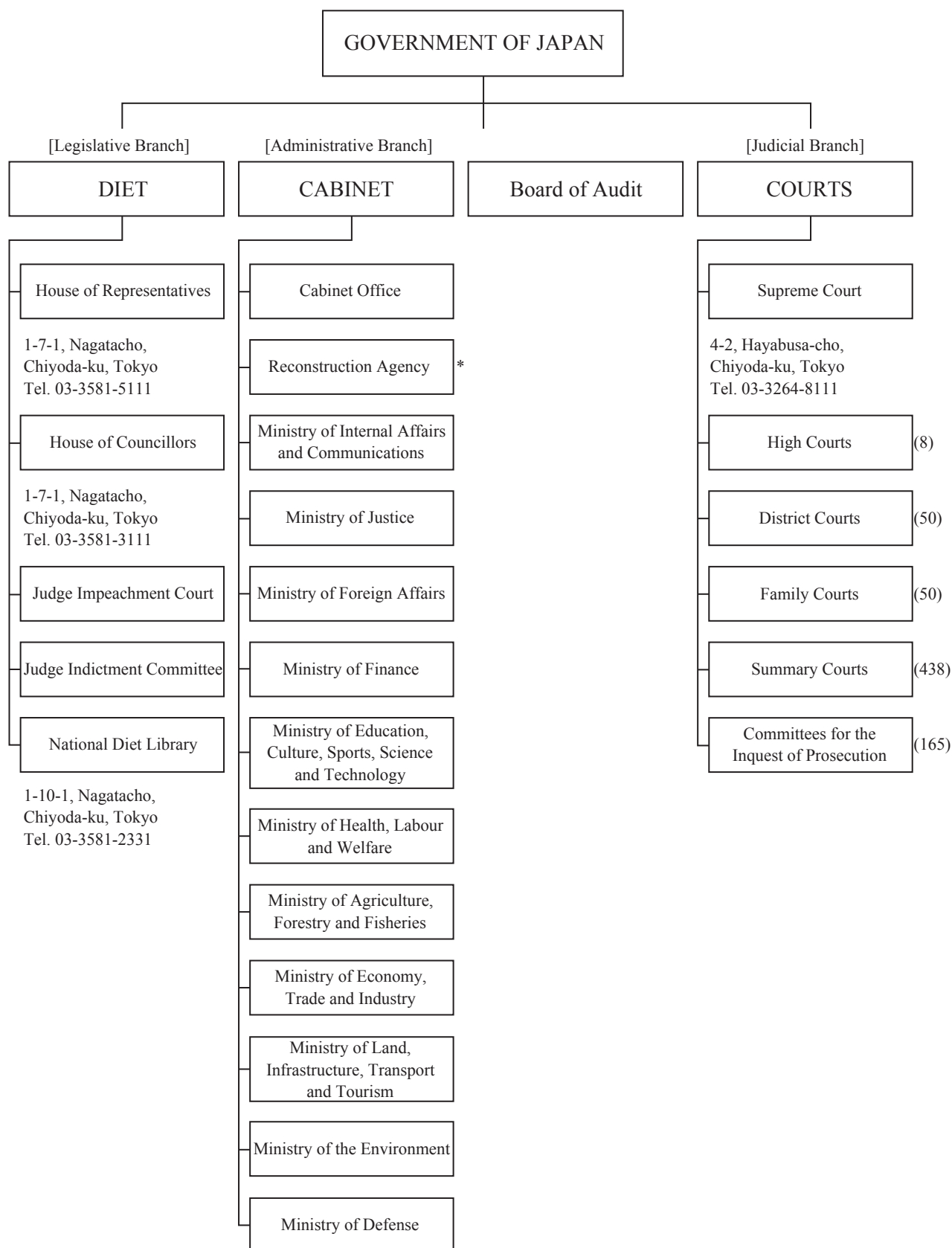


# I ORGANIZATION CHARTS

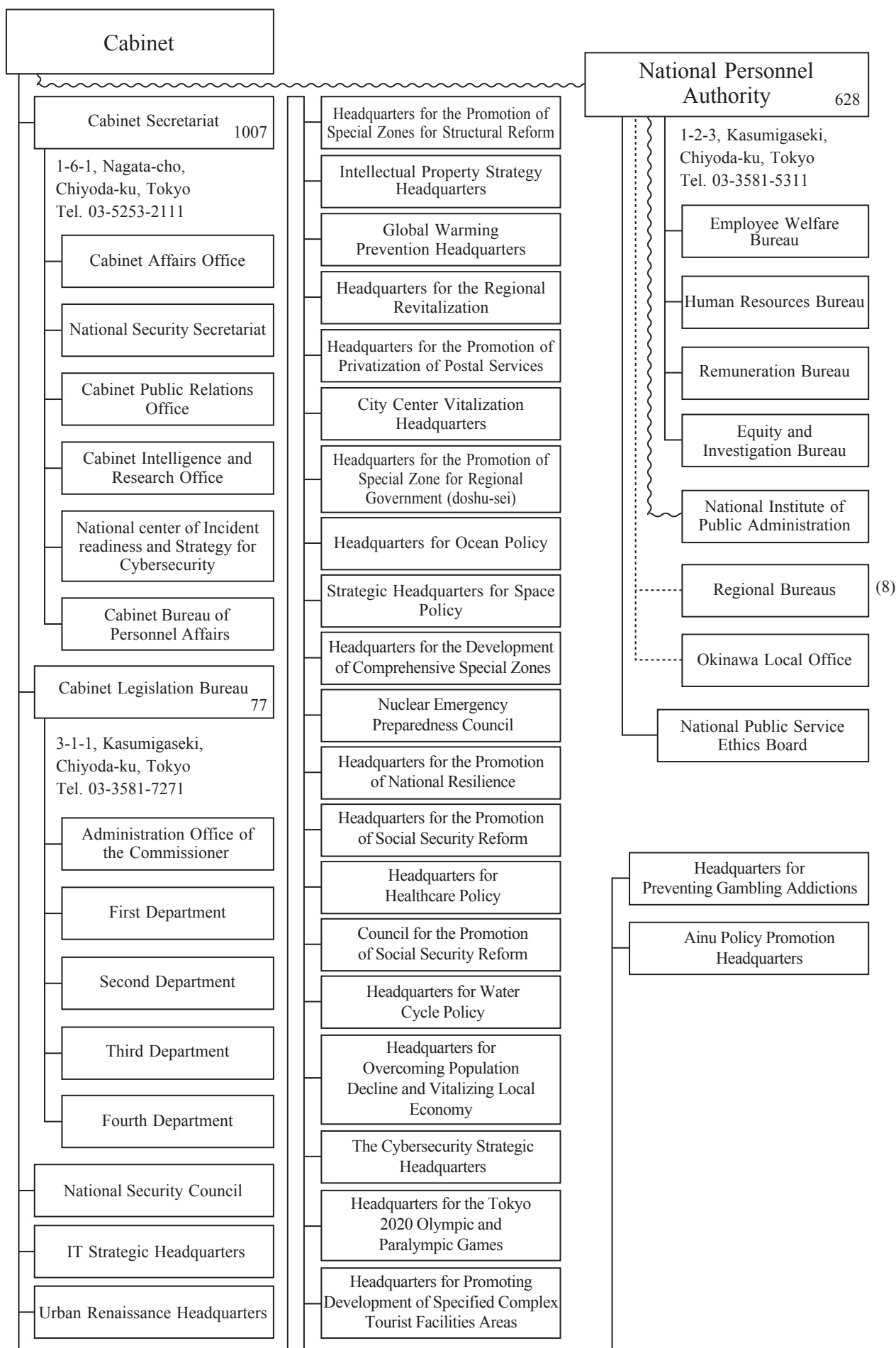
## Notes

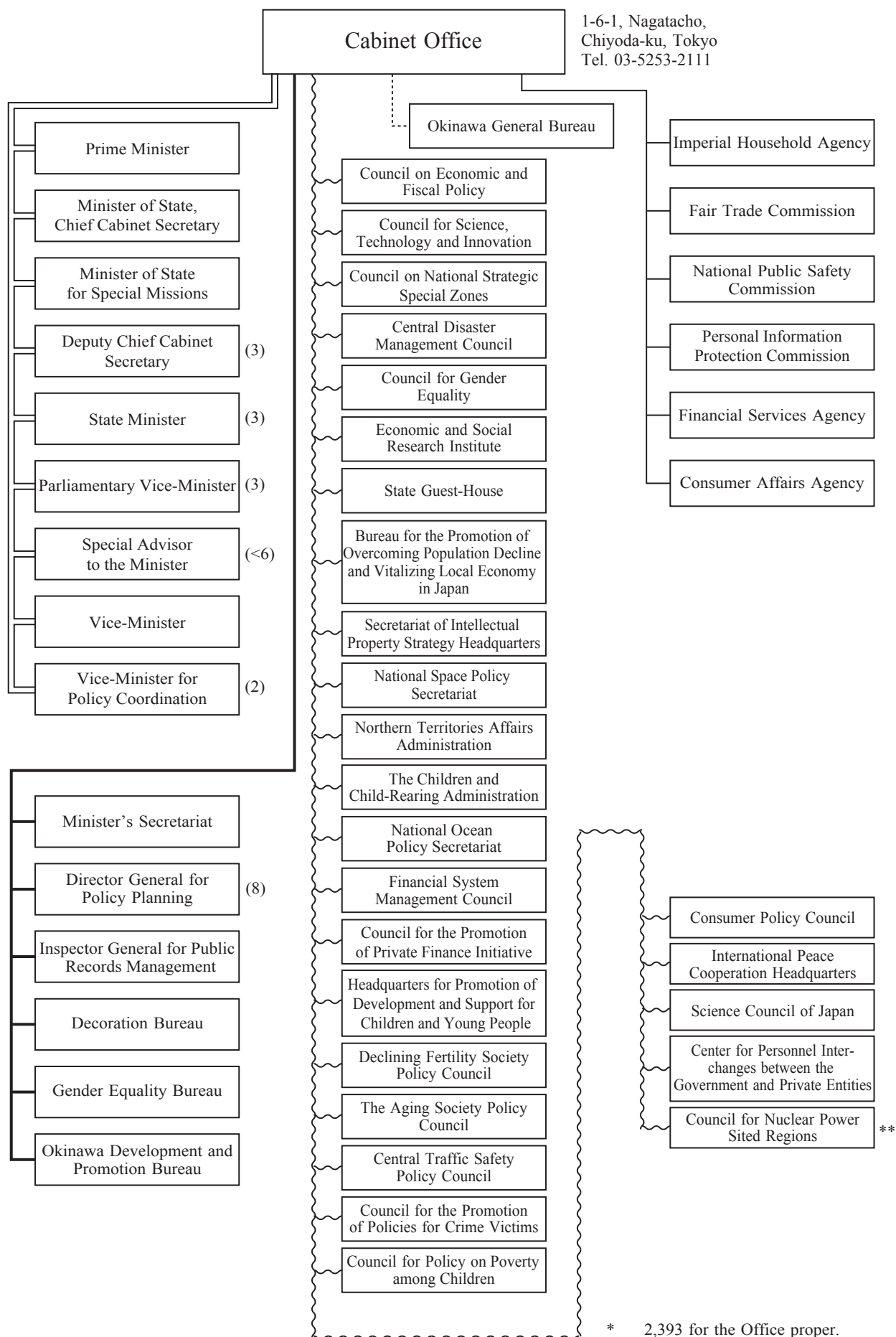
1. Only the major organs and units of each organization (ministry, commission or agency) are shown; divisions of bureaus and departments, and local branch offices at lower levels are omitted. (The names of such divisions appear in “II Organization and Functions of the Executive Branch”.) The councils of each organization are also omitted. They are listed in “III List of Councils”.
2. The lines indicate relationships between organs.

double line (=)	chief organs of each organization
solid line (—)	internal divisions and external organs
broken line (---)	local branch offices
wavy line (~~~)	organs other than the above
3. The figures indicate the fixed number of personnel of each organization.
4. The figures in parentheses indicate the number of units.
5. The data in principle are as of October 1, 2019, except the figures with foot notes.



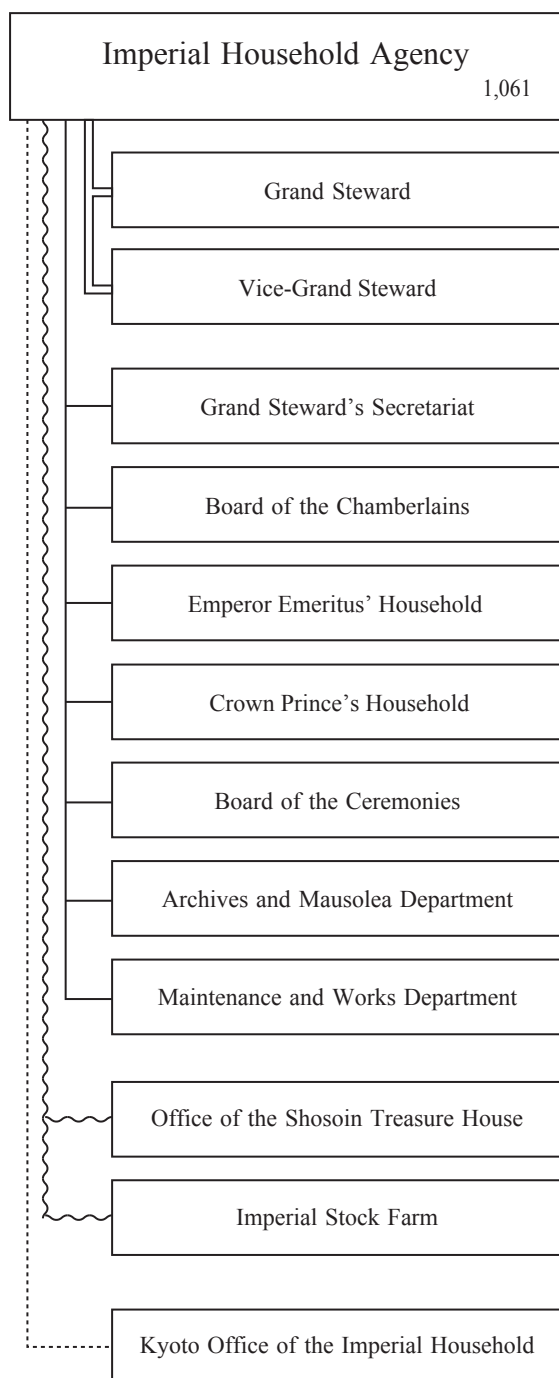
\* Nonpermanent Agency, until 31 March, 2021



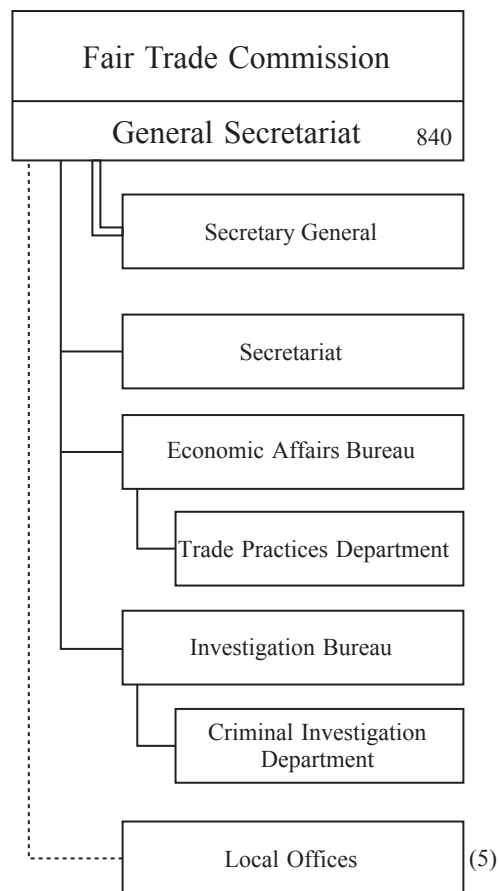


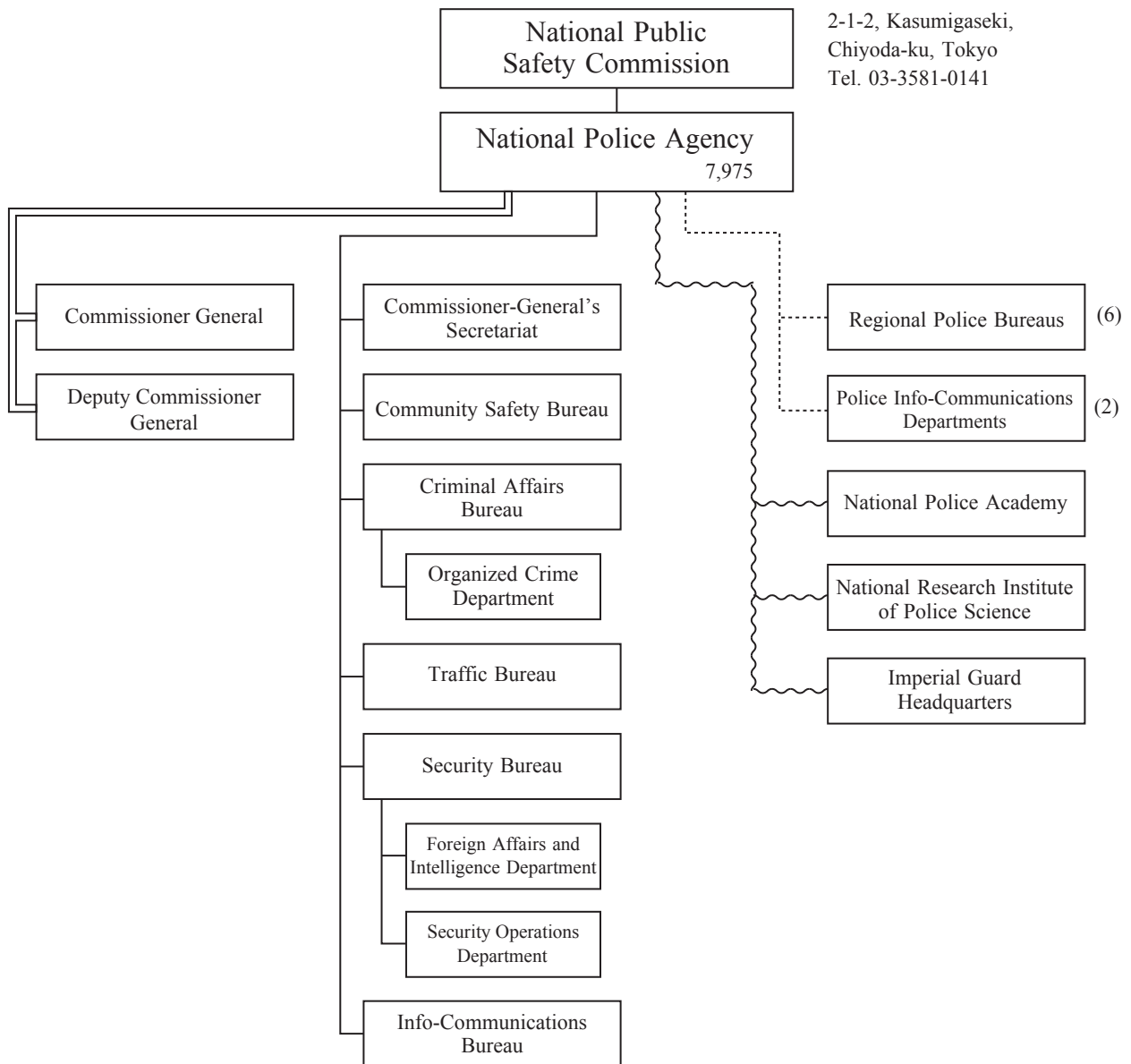


1-1, Chiyoda, Chiyoda-ku, Tokyo  
Tel. 03-3213-1111

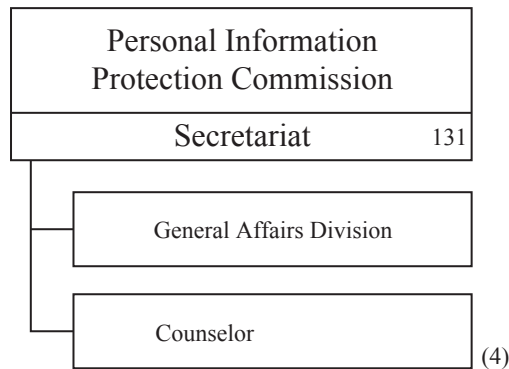


1-1-1, Kasumigaseki, Chiyoda-ku, Tokyo  
Tel. 03-3581-5471

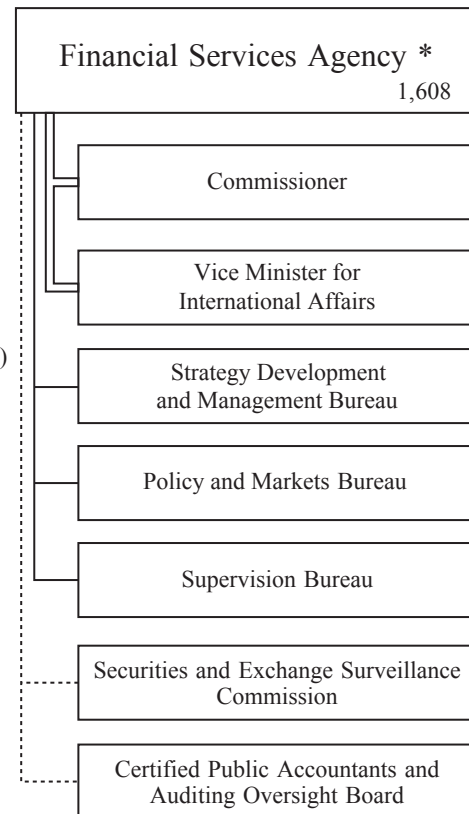




3-2-1, Kasumigaseki, Chiyoda-ku, Tokyo  
Tel. 03-6457-9680

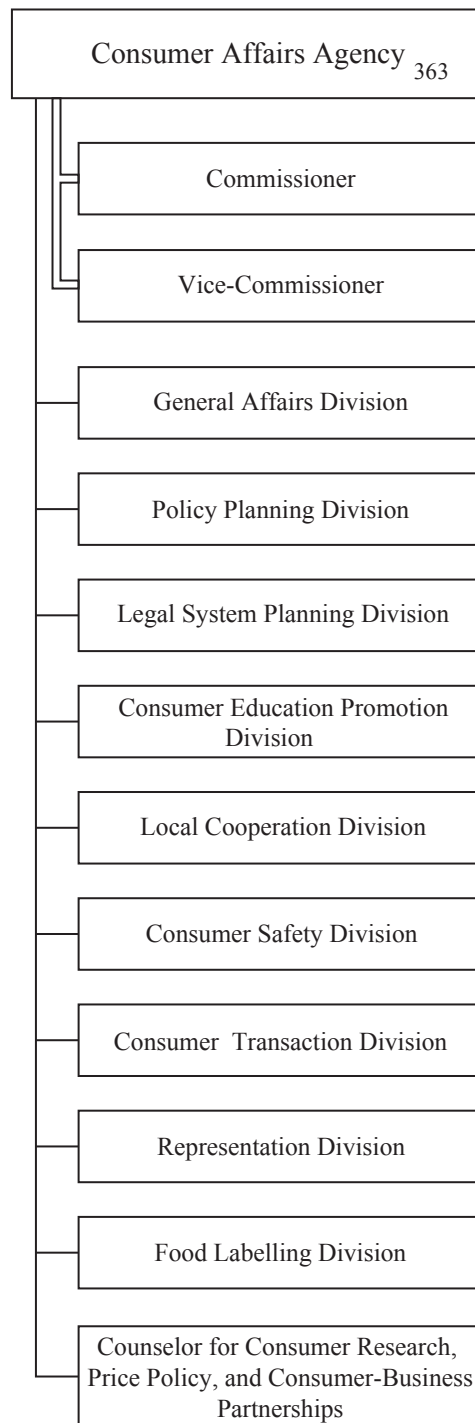


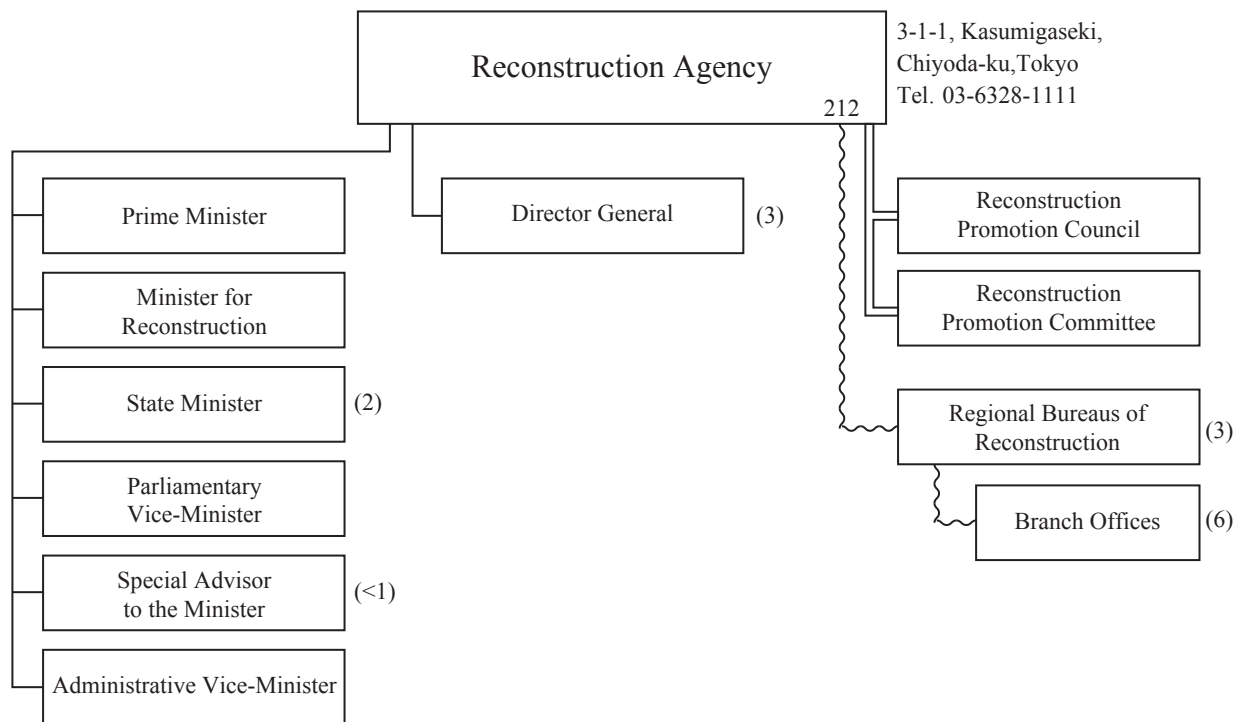
3-2-1, Kasumigaseki, Chiyoda-ku, Tokyo  
Tel. 03-3506-6000



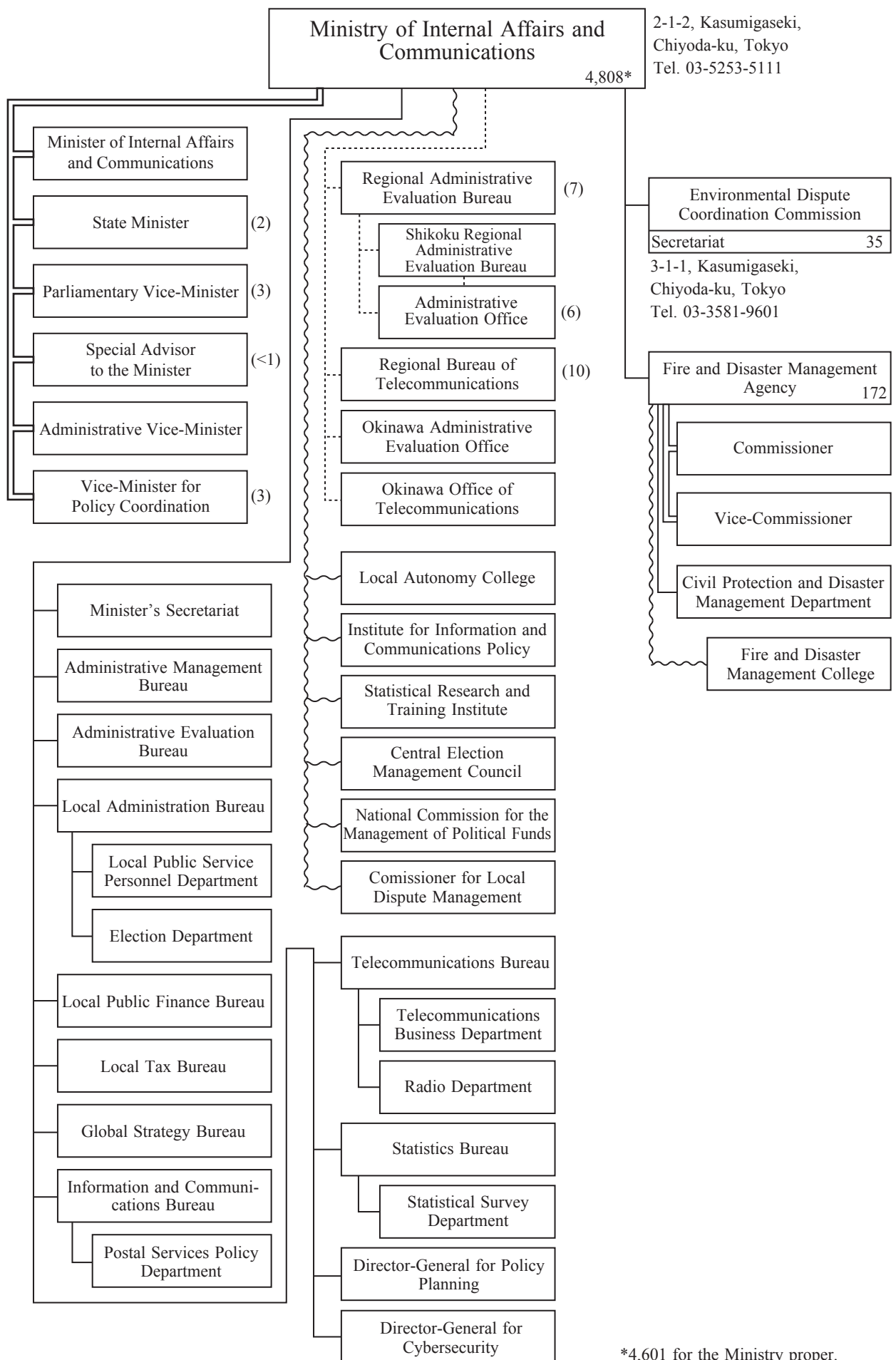
\* Matters which the FSA administers are under the control of Minister for Financial Services.

3-1-1, Kasumigaseki, Chiyoda-ku, Tokyo  
Tel. 03-3507-8800

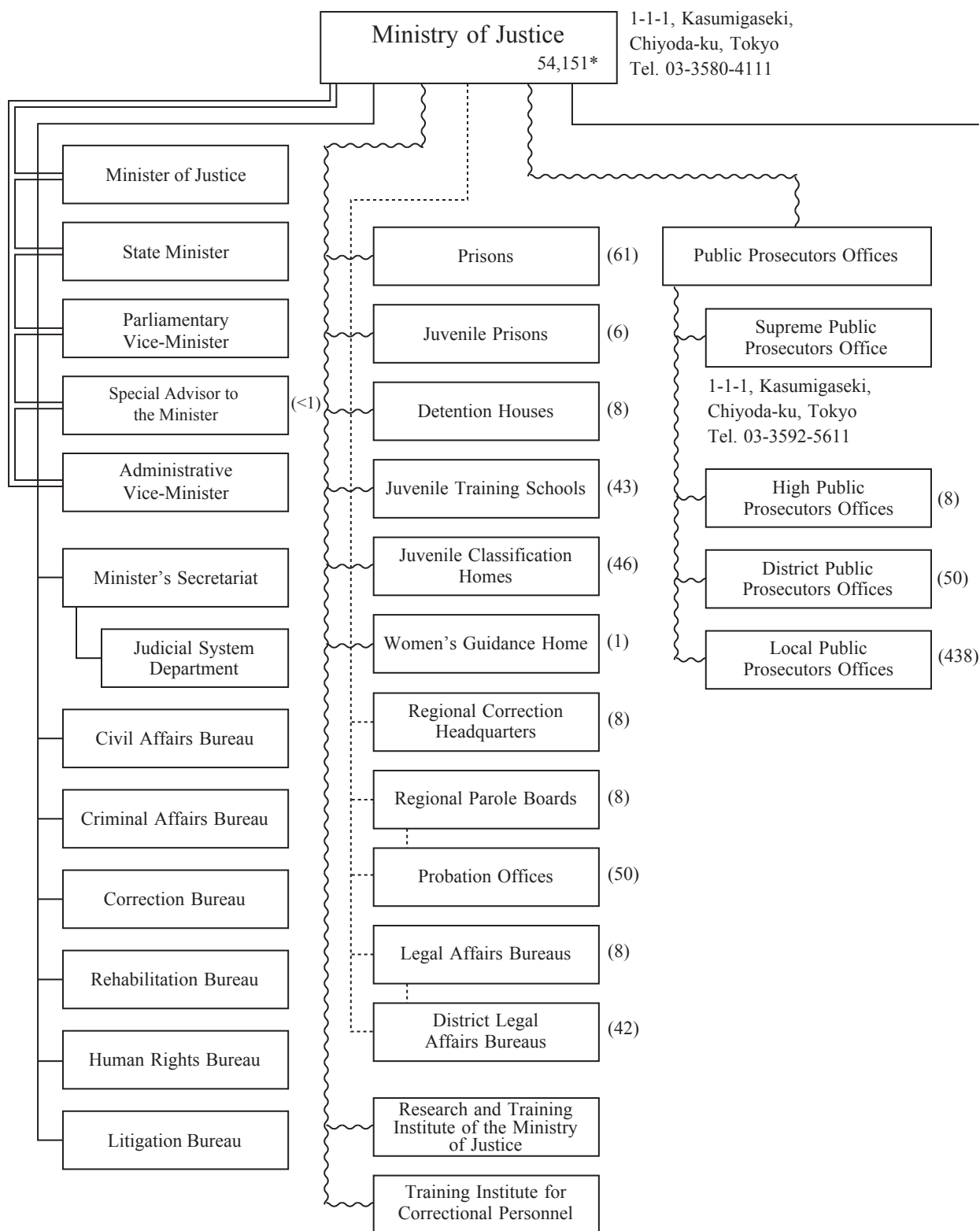




\* Nonpermanent Agency, until 31 March, 2021

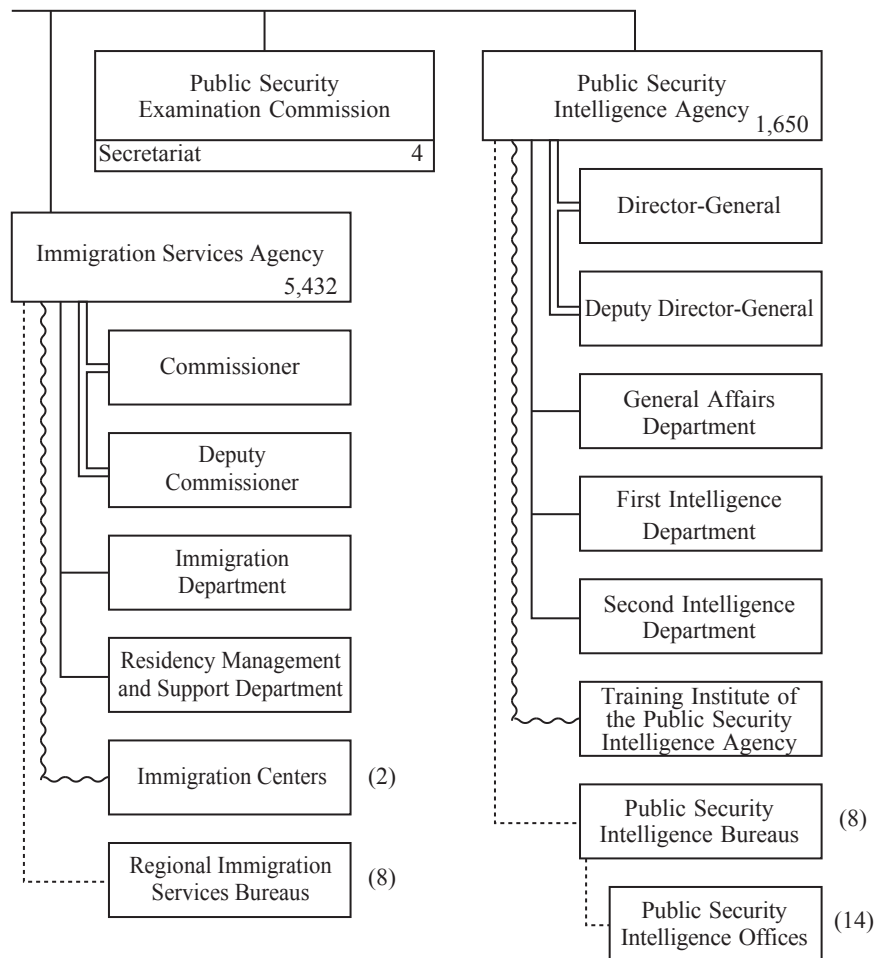


\*4,601 for the Ministry proper.

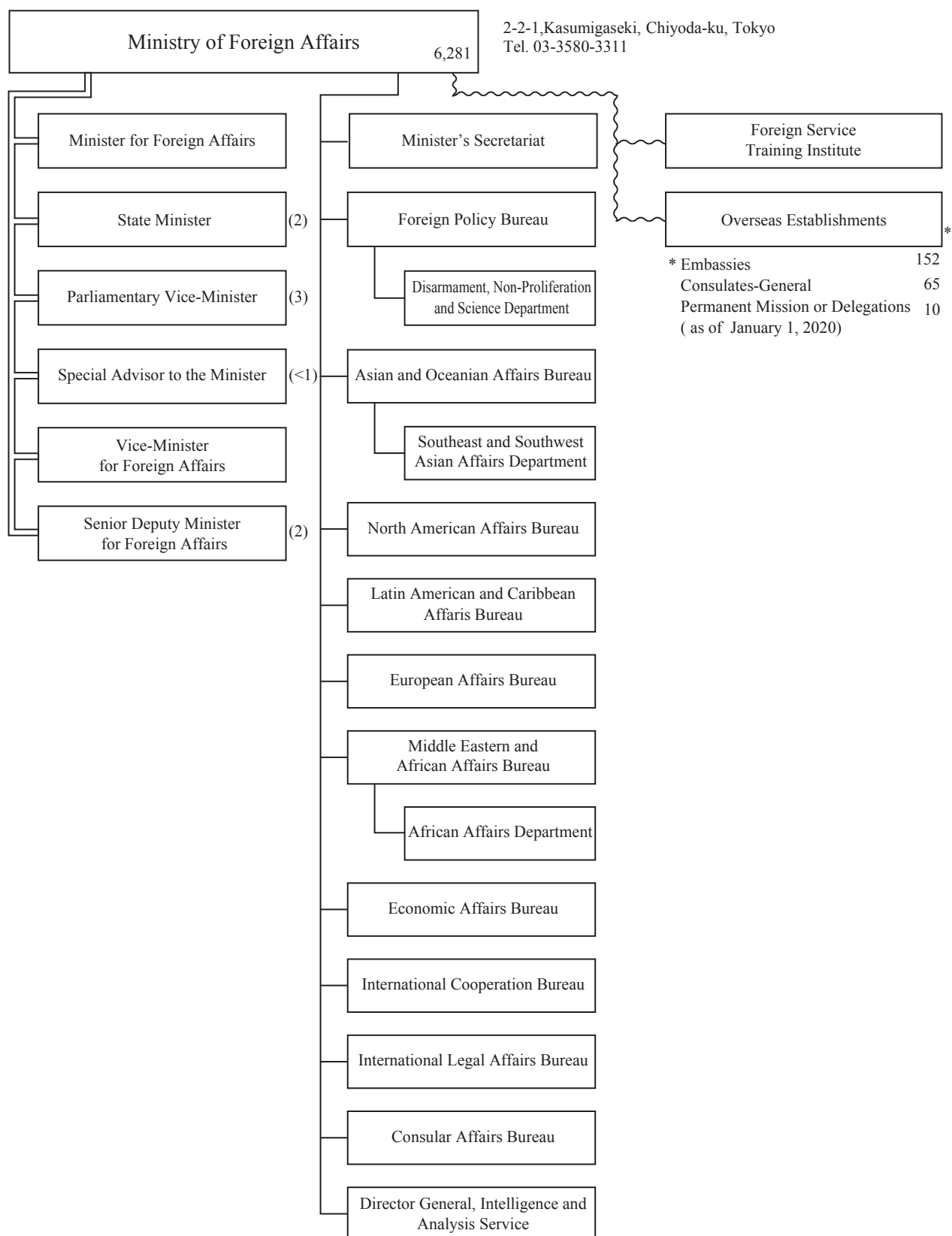


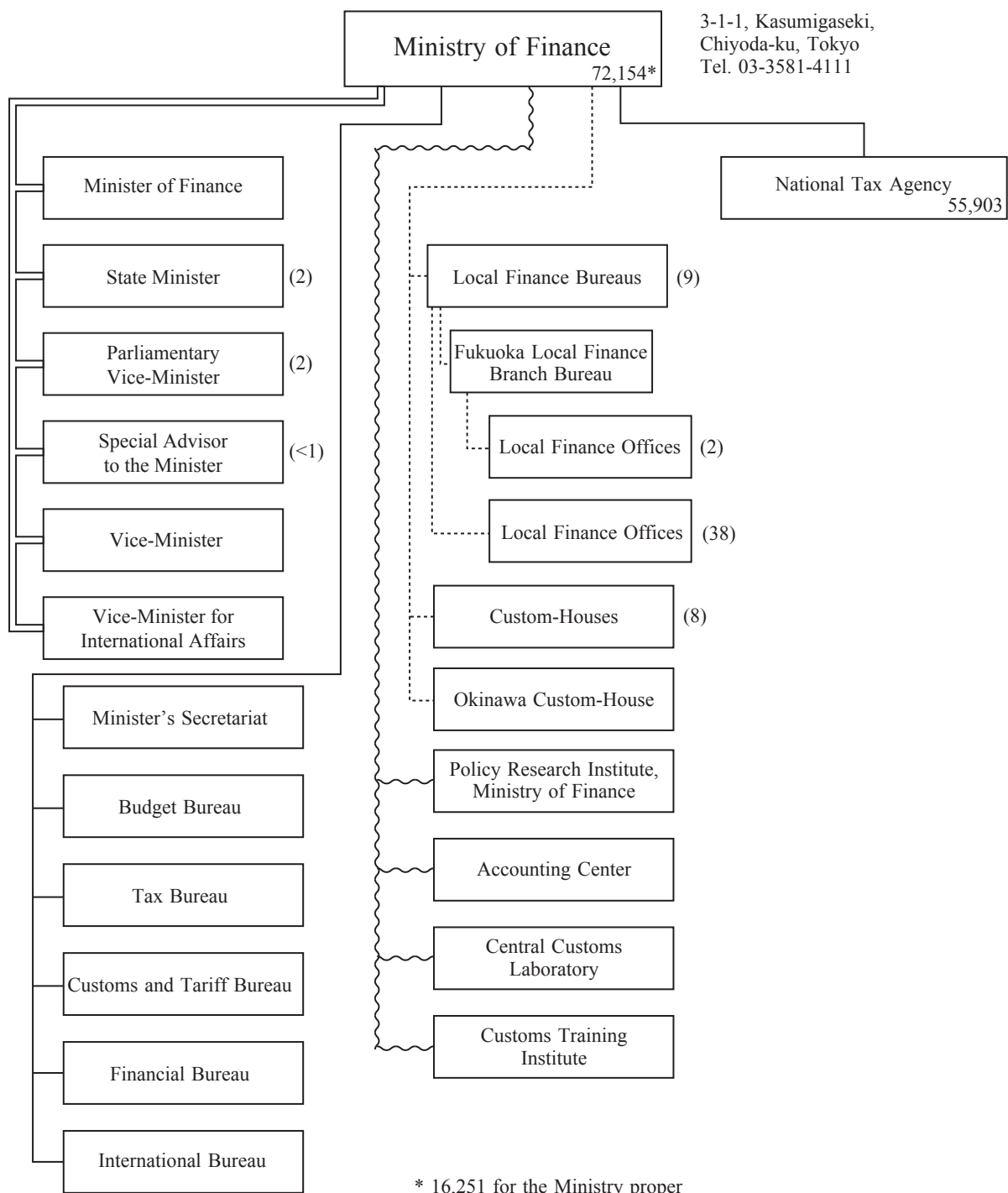
\* 47,065 for the Ministry proper.

1-1-1, Kasumigaseki,  
Chiyoda-ku, Tokyo  
Tel. 03-3592-5711

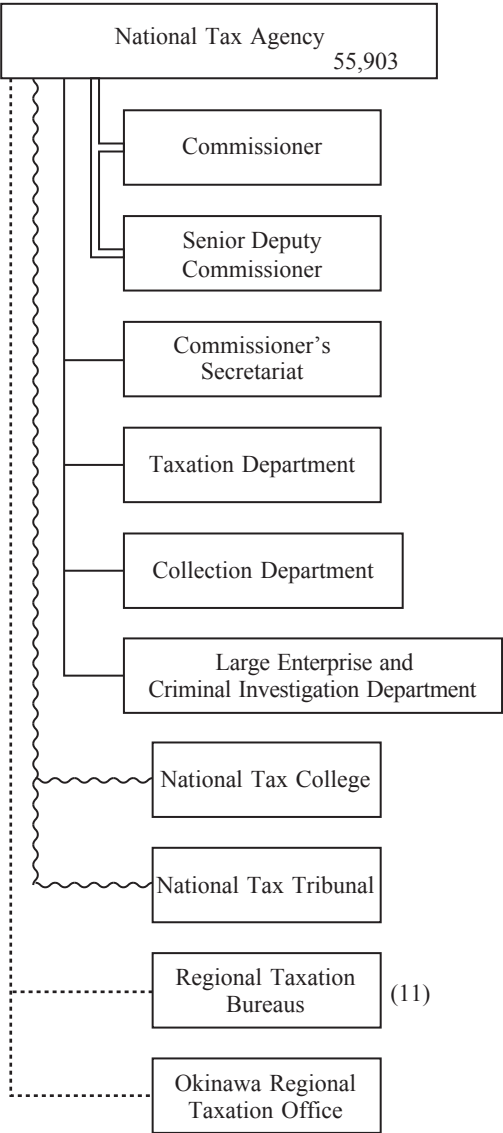


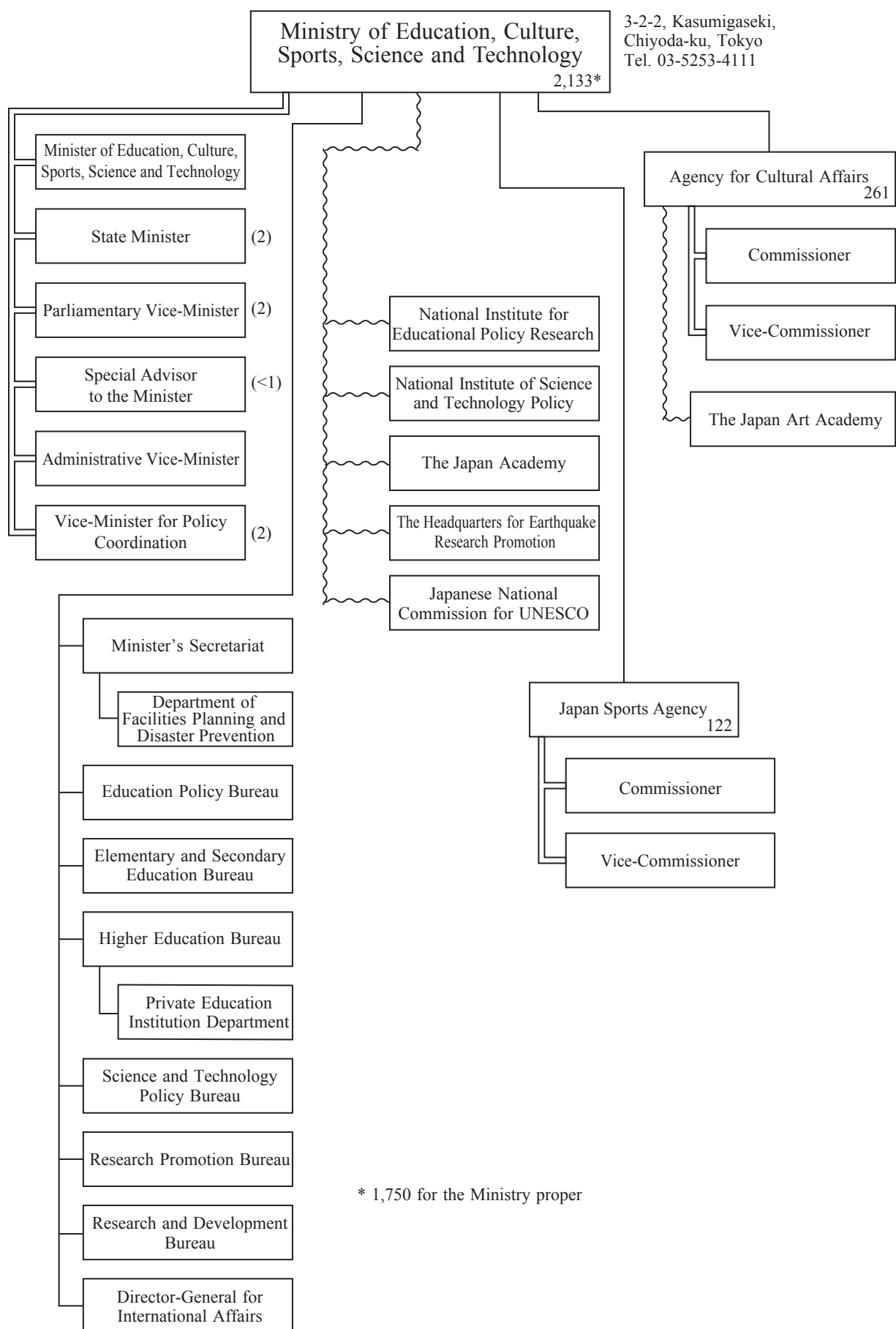


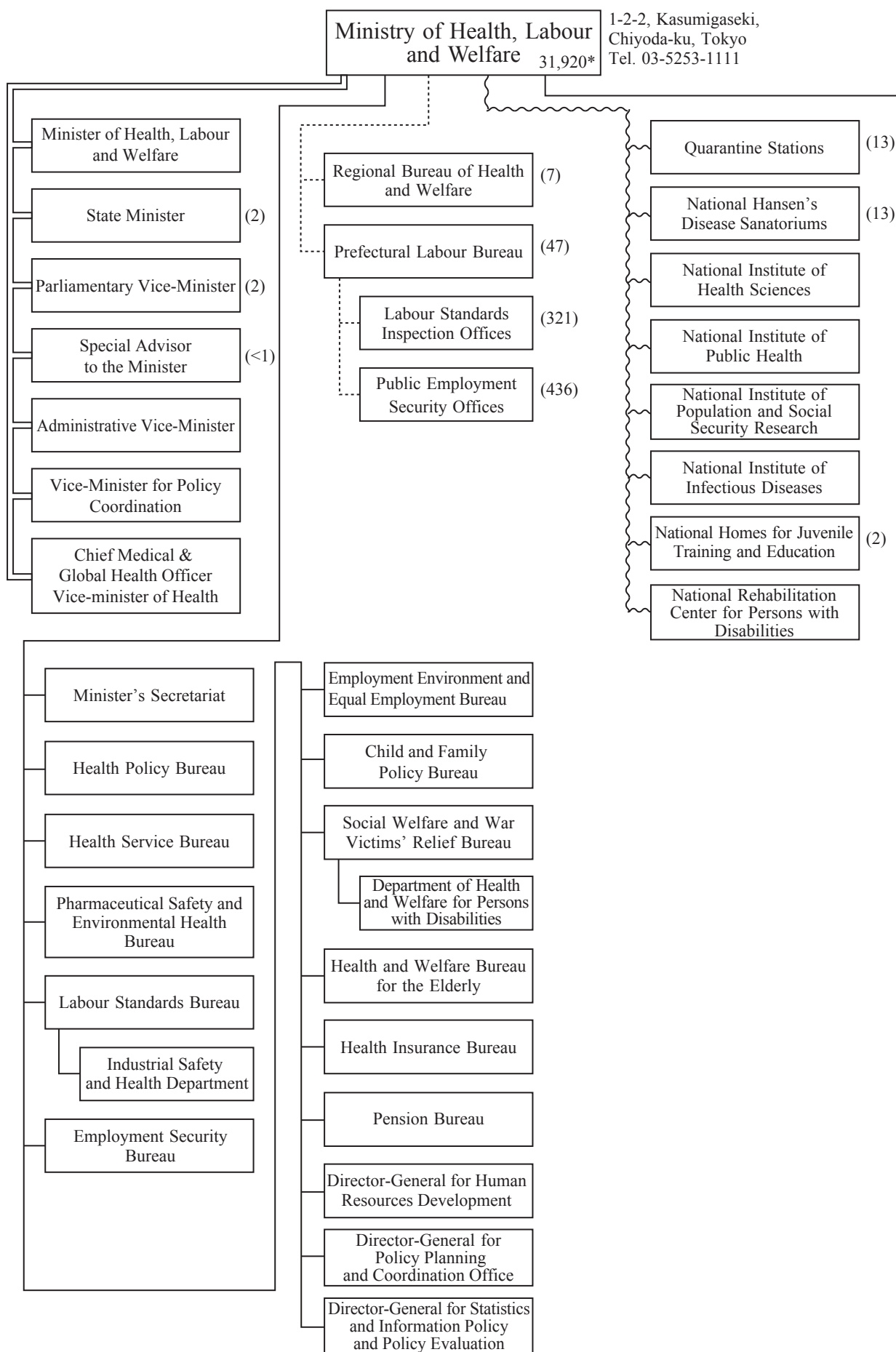




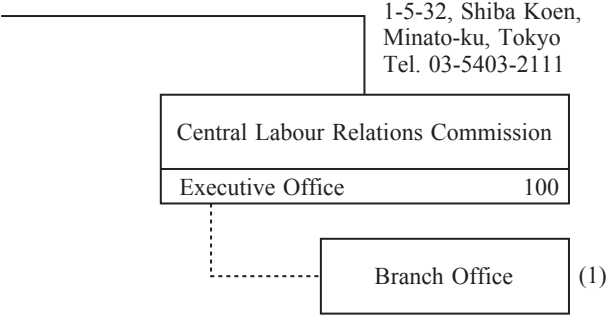
3-1-1, Kasumigaseki,  
Chiyoda-ku, Tokyo  
Tel. 03-3581-4161

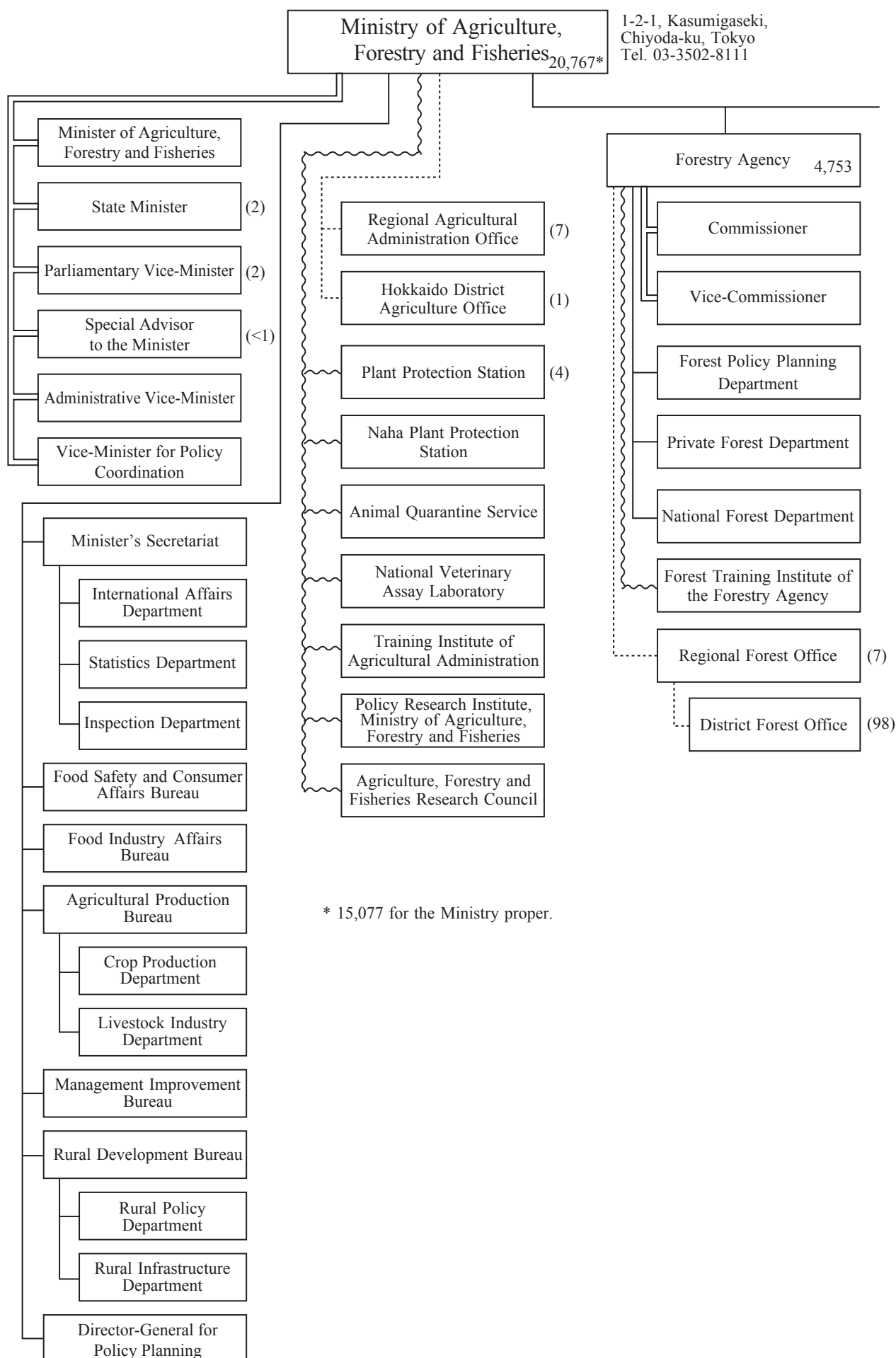


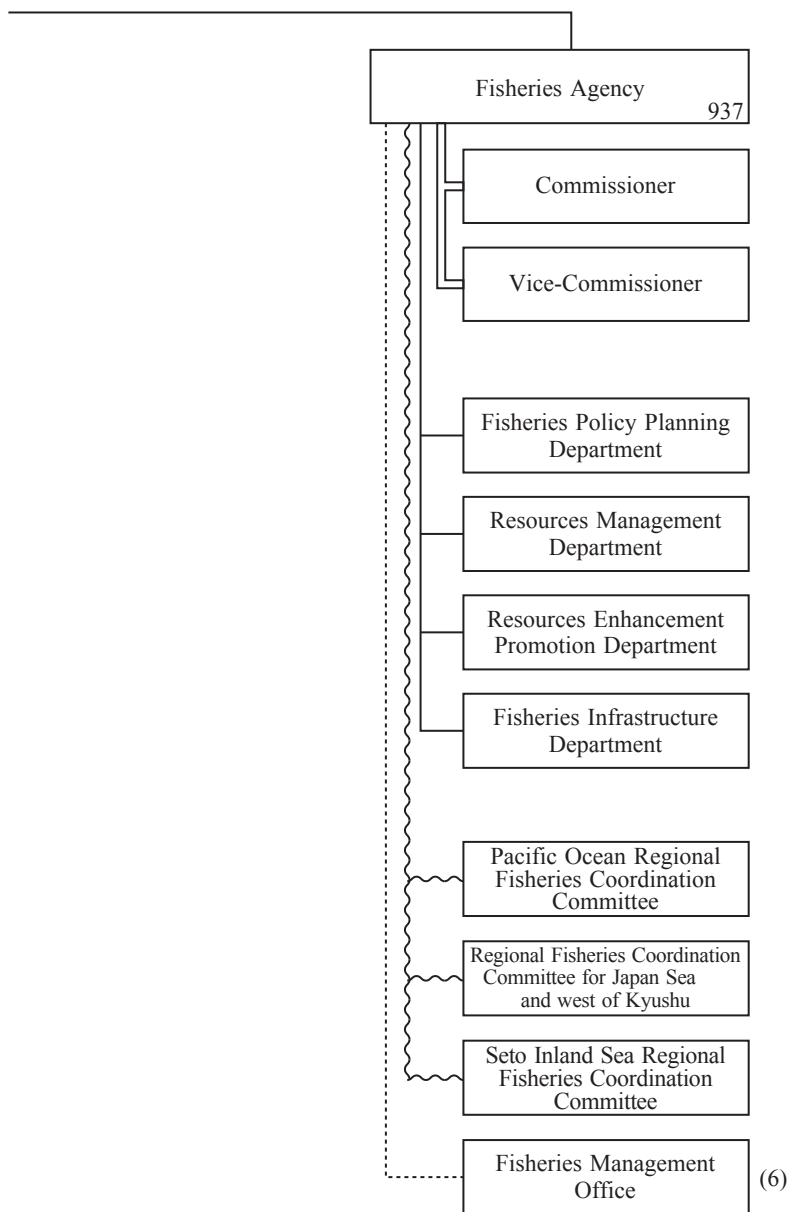




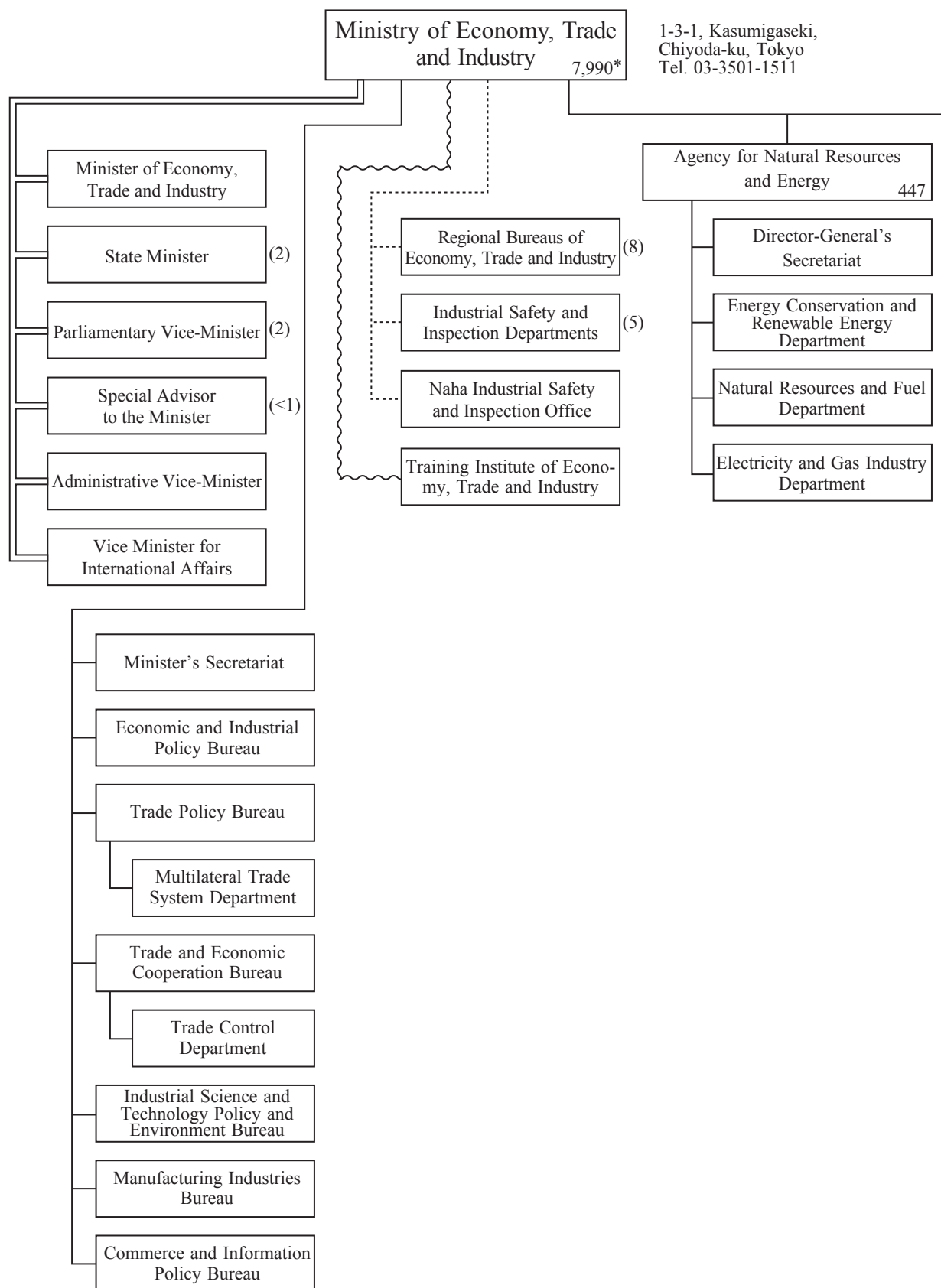
\* 31,820 for the Ministry proper.



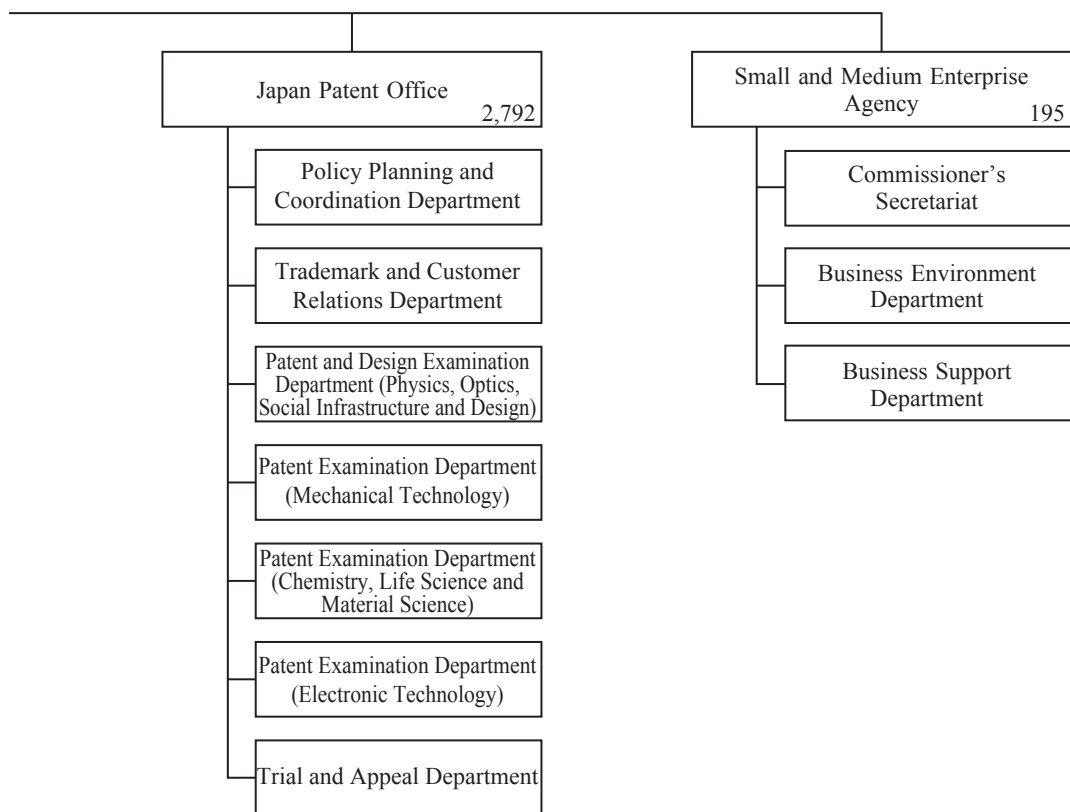


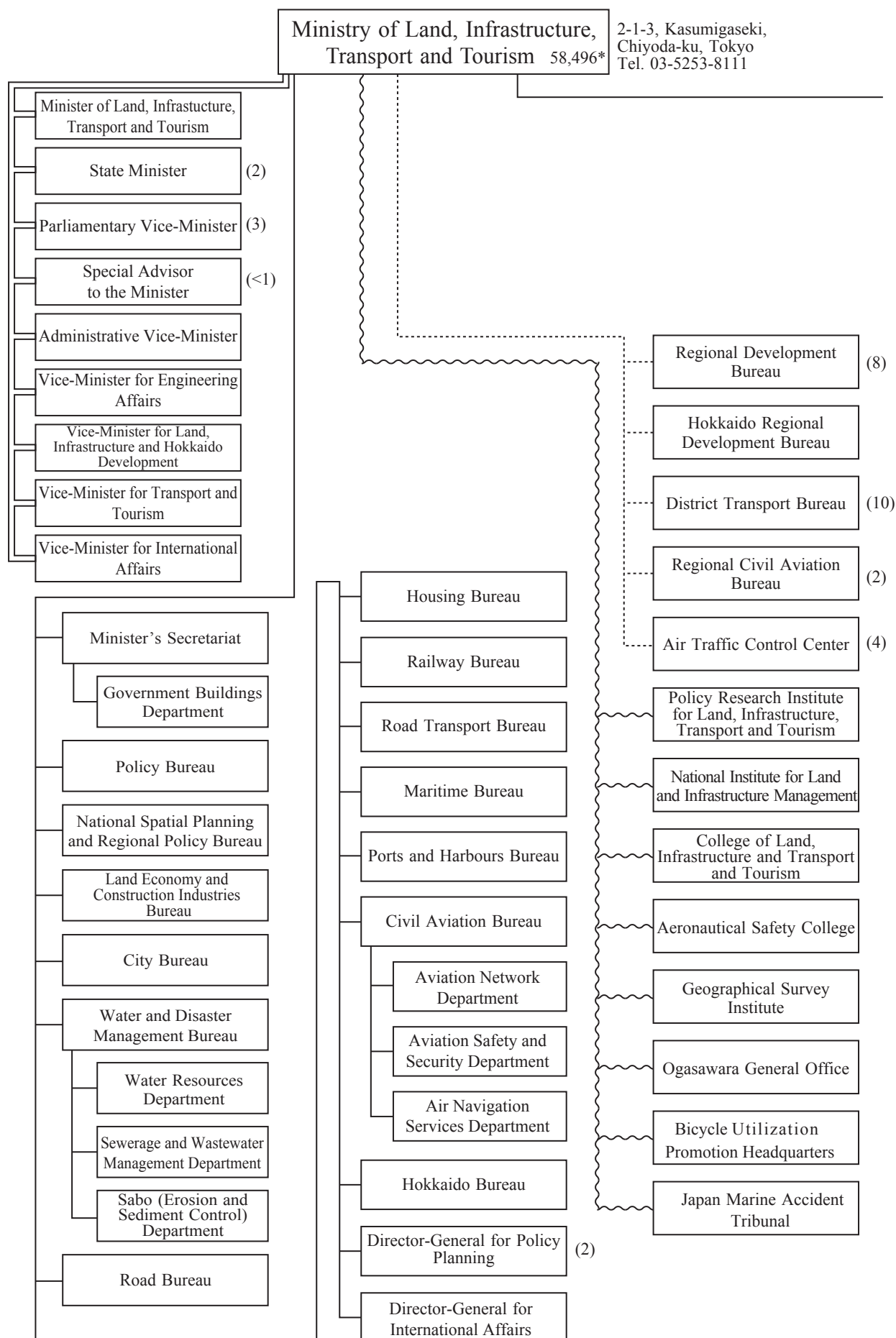




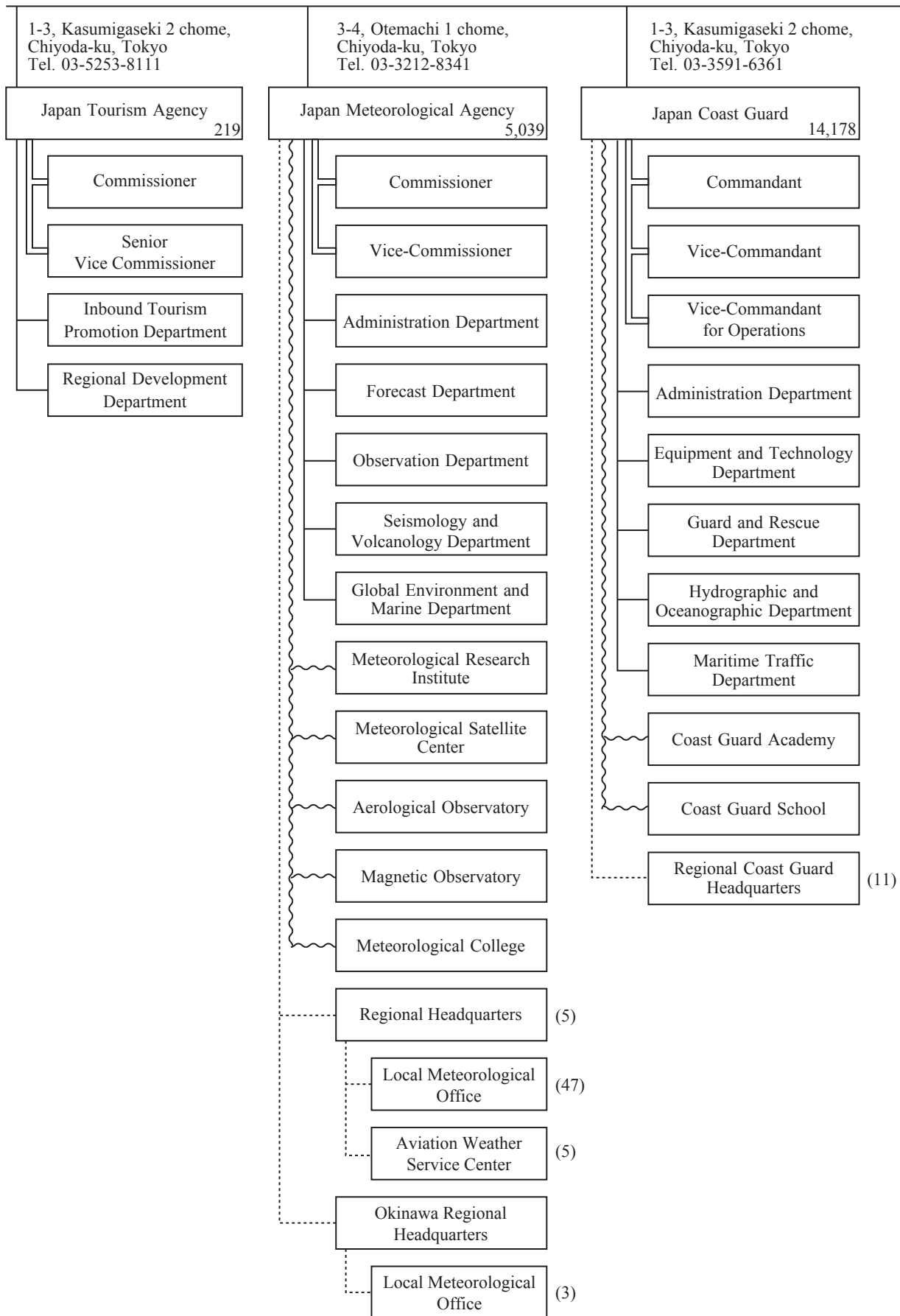


\* 4,556 for the Ministry proper.

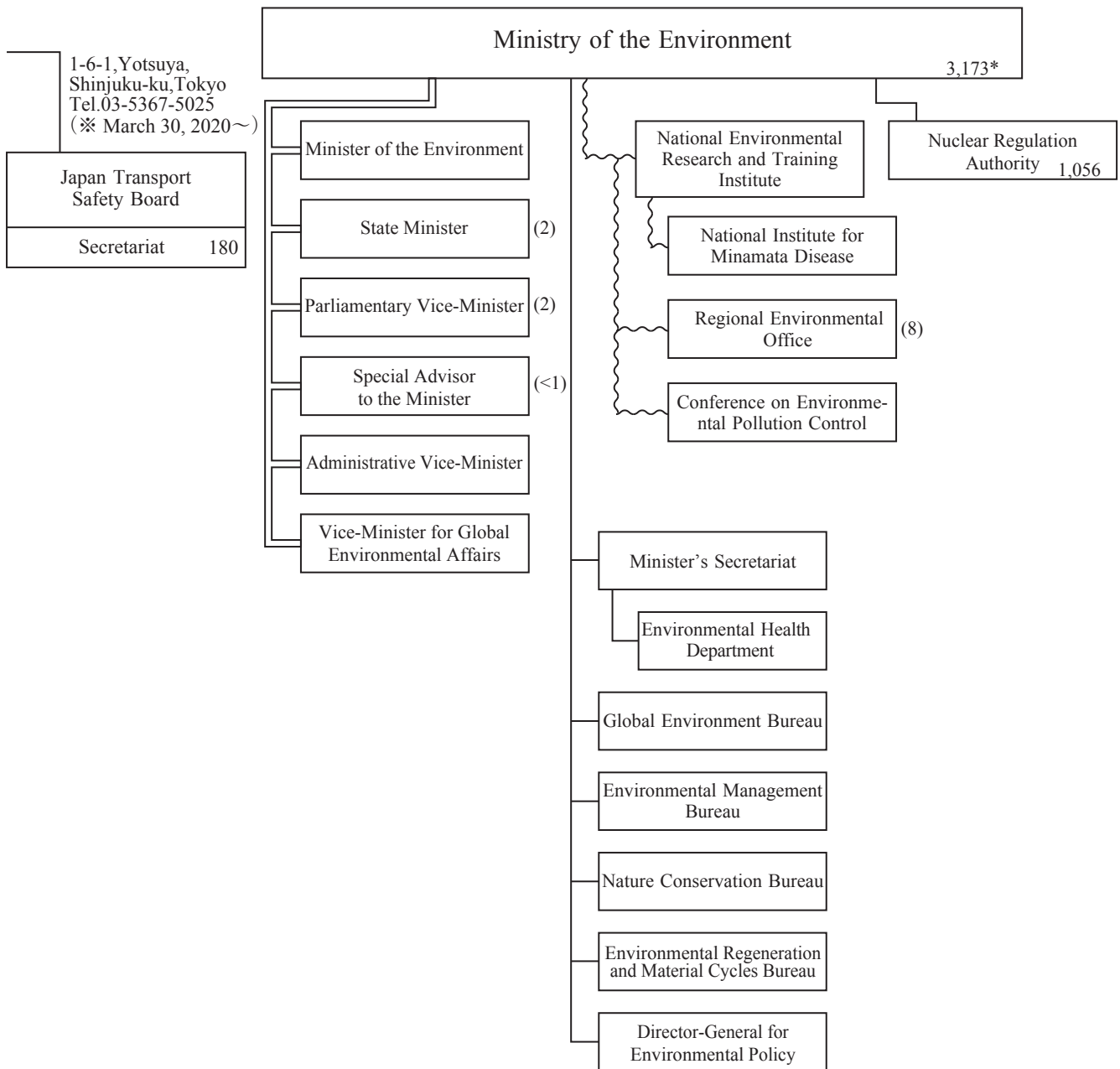




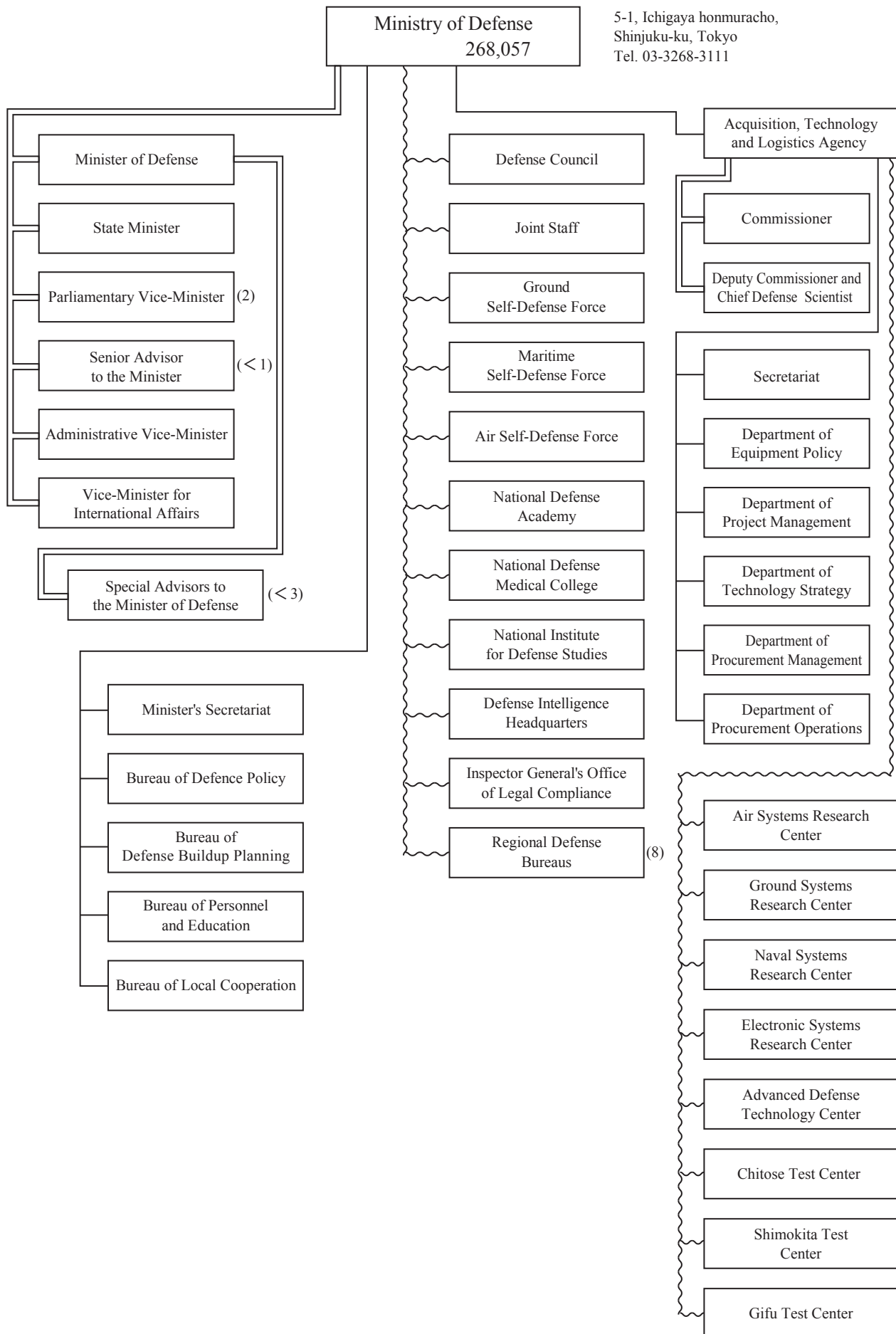
\* 38,880 for the Ministry proper.



1-2-2, Kasumigaseki, Chiyoda-ku, Tokyo  
Tel. 03-3581-3351



\* 2,117 for the Ministry proper.



3-2-2, Kasumigaseki, Chiyoda-ku, Tokyo  
Tel. 03-3581-3251

