

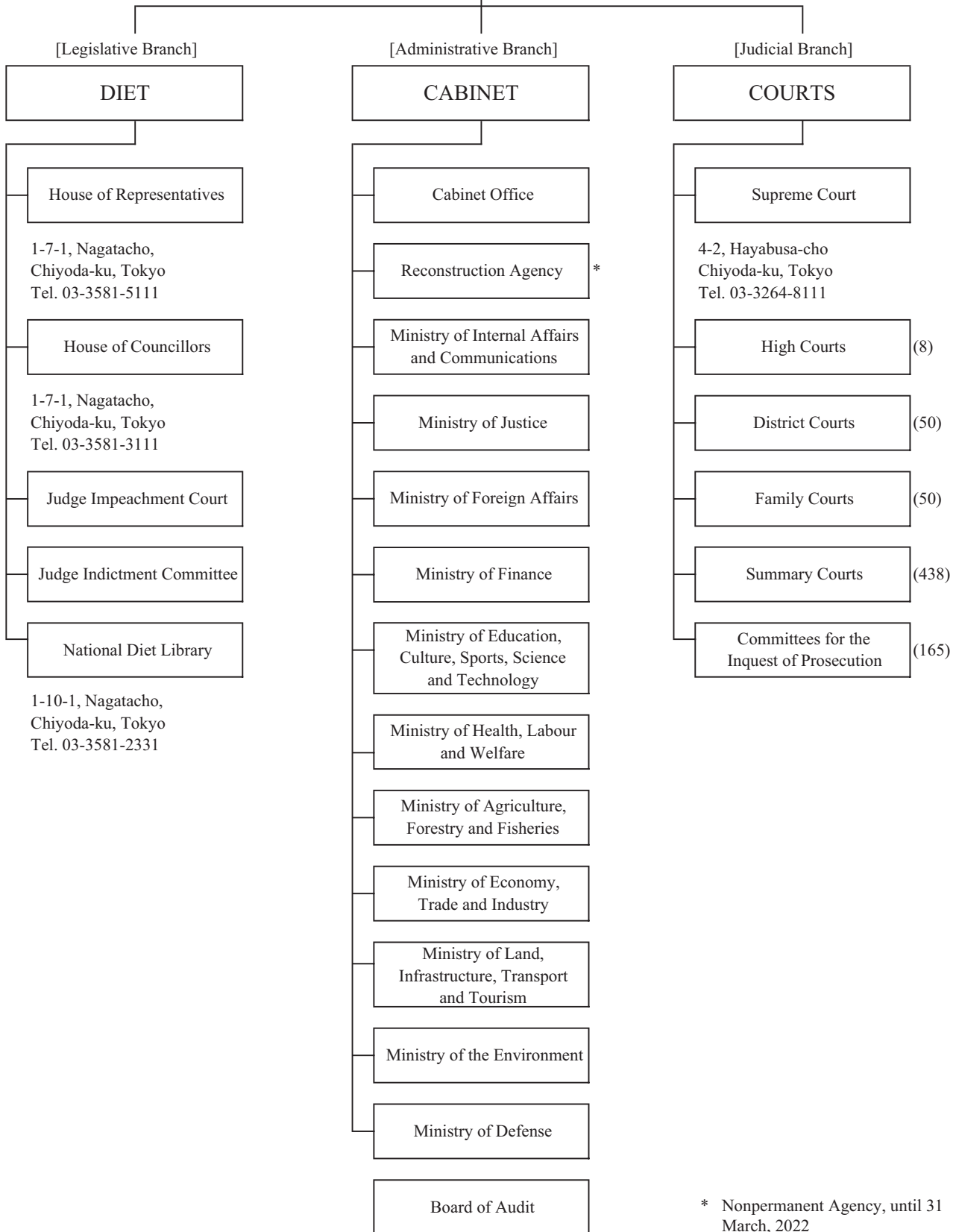
I ORGANIZATION CHARTS

Notes

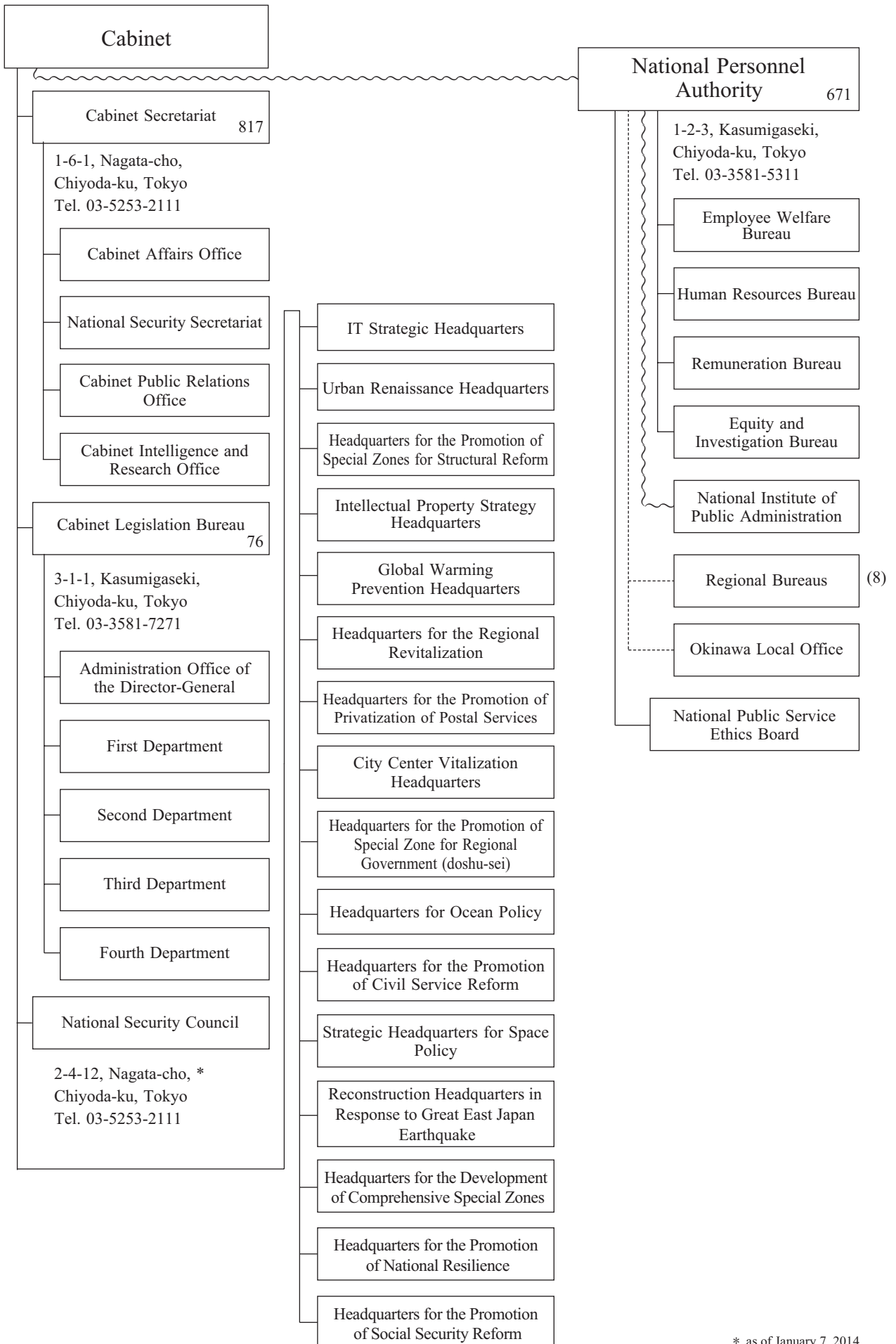
1. Only the major organs and units of each organization (ministry, commission or agency) are shown; divisions of bureaus and departments, and local branch offices at lower levels are omitted. (The names of such divisions appear in “II Organization and Functions of the Executive Branch”.) The councils of each organization are also omitted. They are listed in “III List of Councils”.
2. The lines indicate relationships between organs.

double line (=)	chief organs of each organization
solid line (—)	internal divisions and external organs
broken line (- - -)	local branch offices
wavy line (~ ~ ~)	auxiliary organs
3. The figures indicate the fixed number of personnel of each organization.
4. The figures in parentheses indicate the number of units.
5. The data in principle are as of December 1, 2013, except the figures with foot notes.

GOVERNMENT OF JAPAN



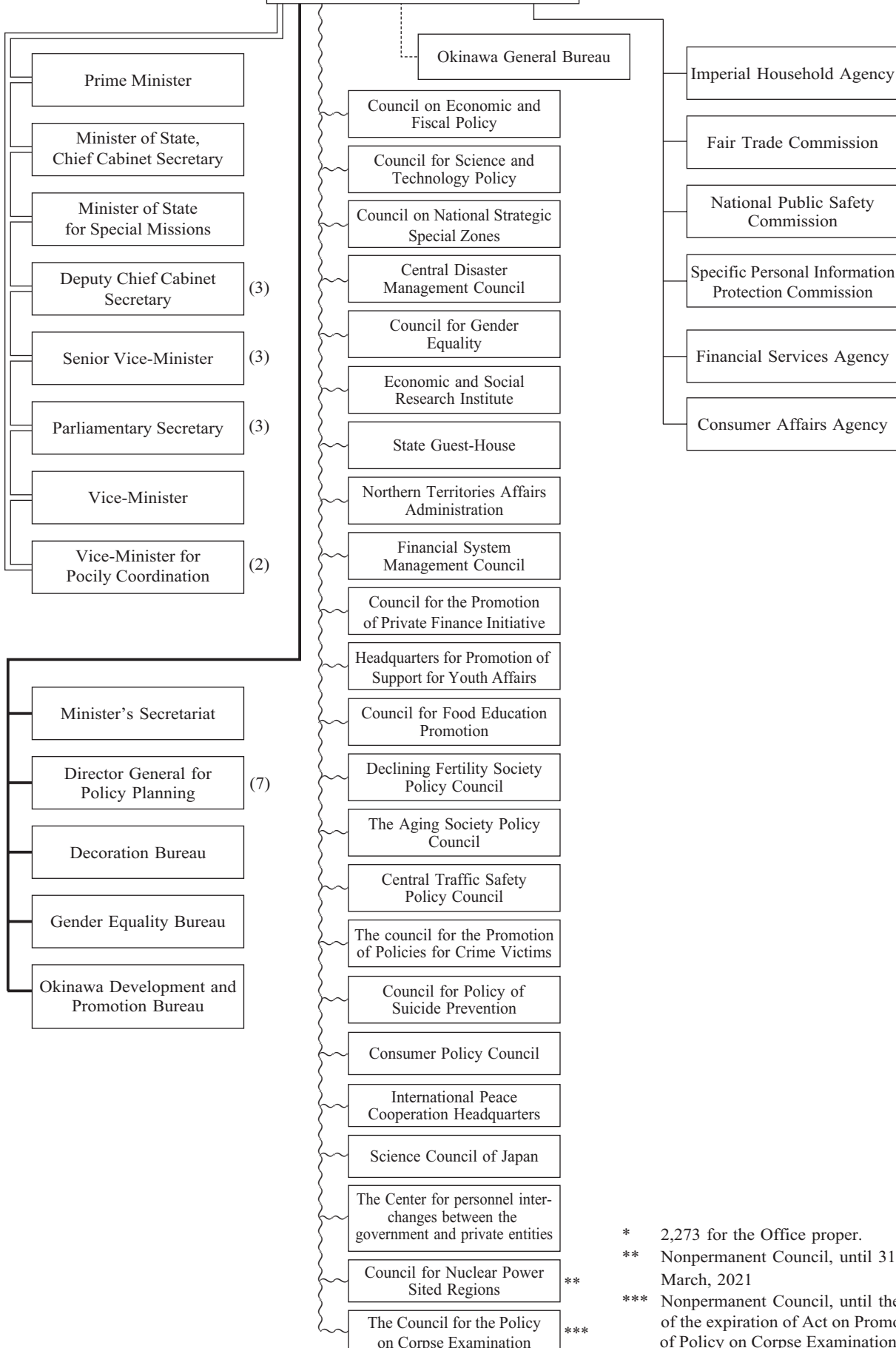
* Nonpermanent Agency, until 31 March, 2022



* as of January 7, 2014

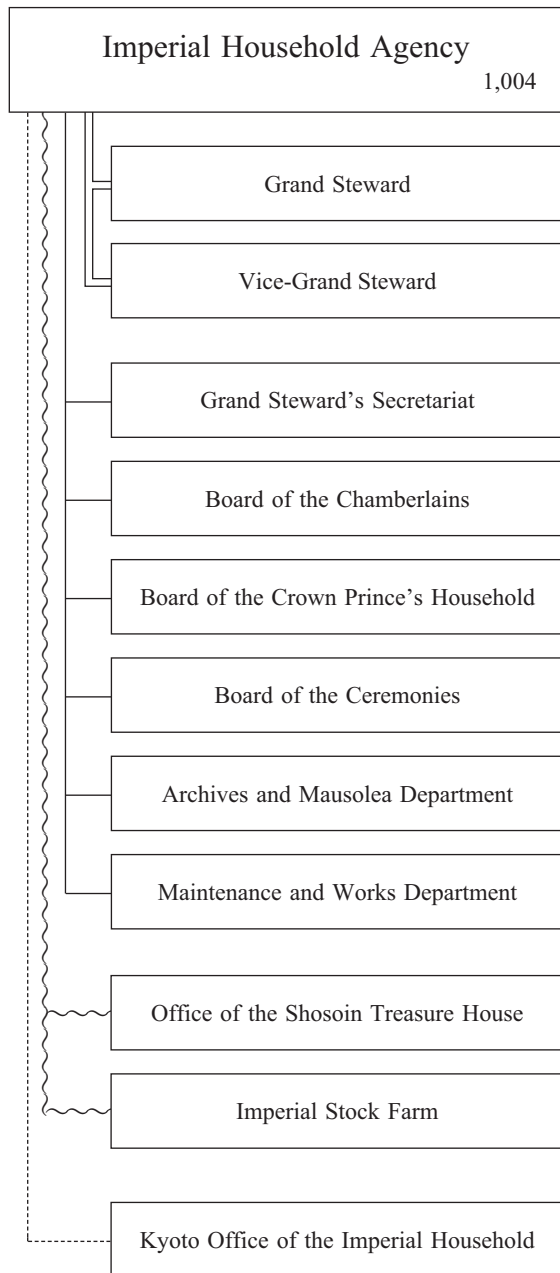
Cabinet Office

1-6-1, Nagatacho,
Chiyoda-ku, Tokyo
Tel. 03-5253-2111

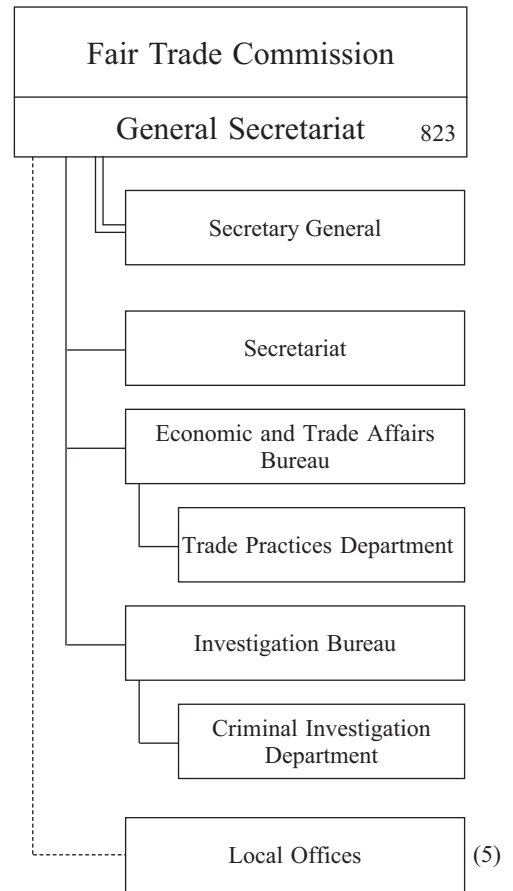


* 2,273 for the Office proper.
** Nonpermanent Council, until 31 March, 2021
*** Nonpermanent Council, until the date of the expiration of Act on Promotion of Policy on Corpse Examination.

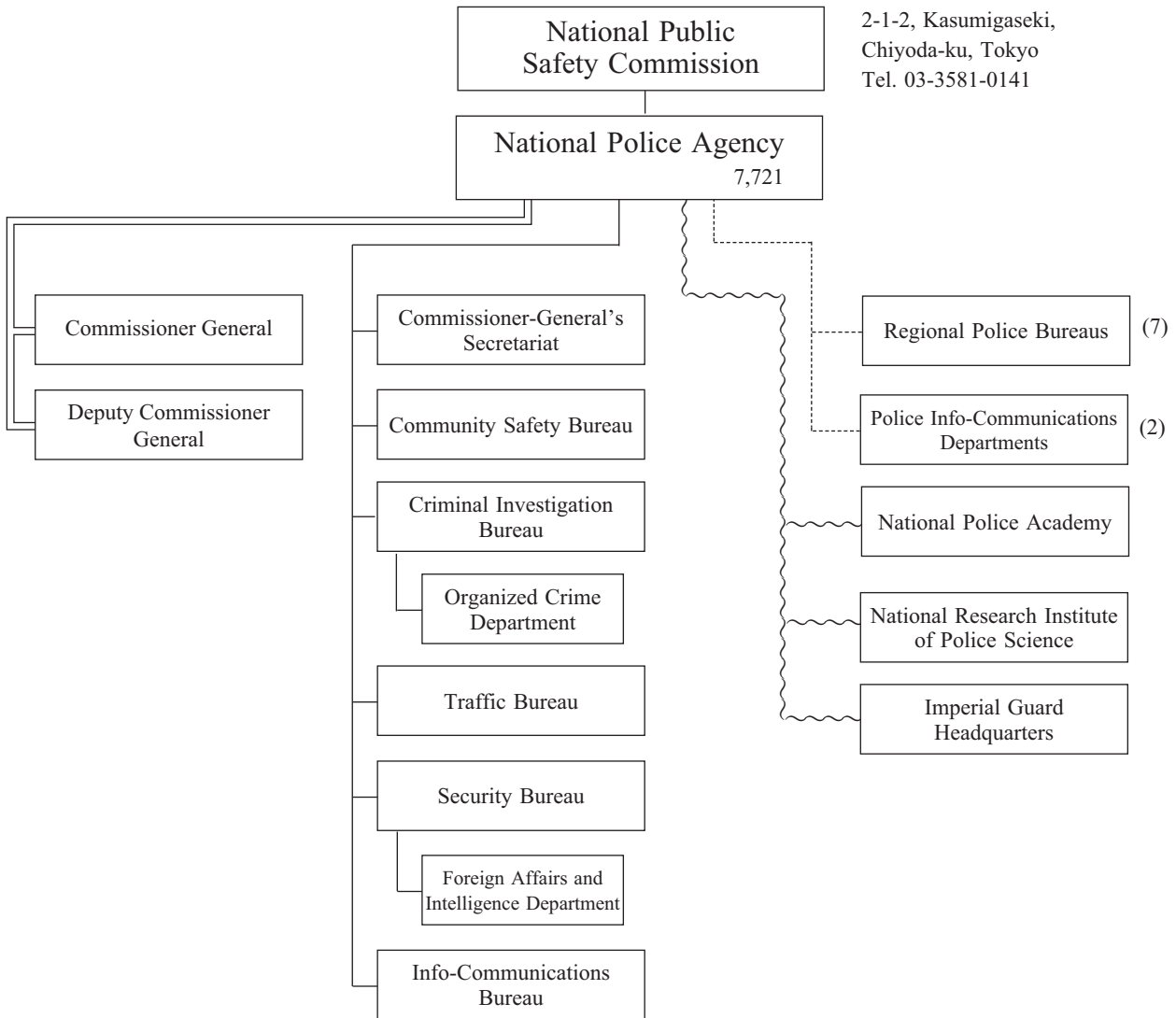
1-1, Chiyoda, Chiyoda-ku, Tokyo
Tel. 03-3213-1111



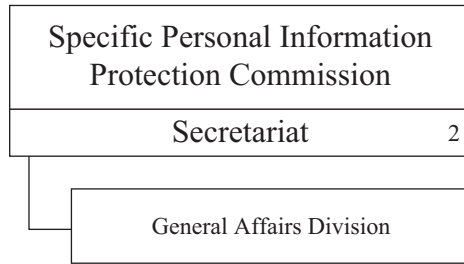
1-1-1, Kasumigaseki, Chiyoda-ku, Tokyo
Tel. 03-3581-5471



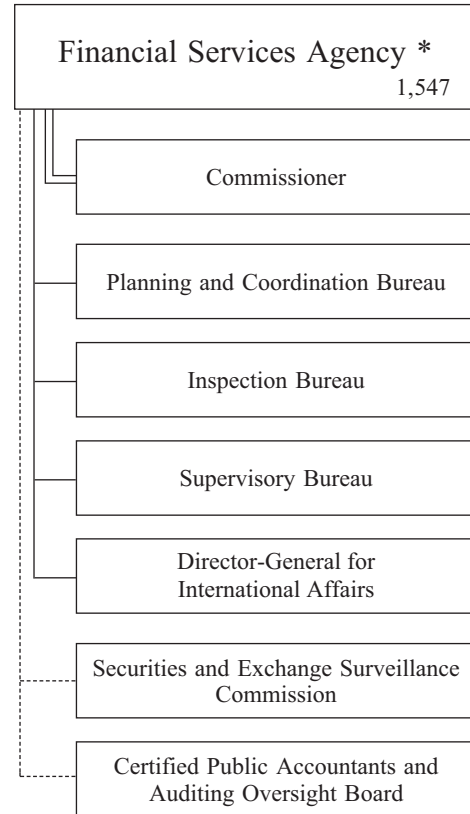
2-1-2, Kasumigaseki,
Chiyoda-ku, Tokyo
Tel. 03-3581-0141



1-9-13, Akasaka, Minato-ku, Tokyo
Tel. 03-6441-3685

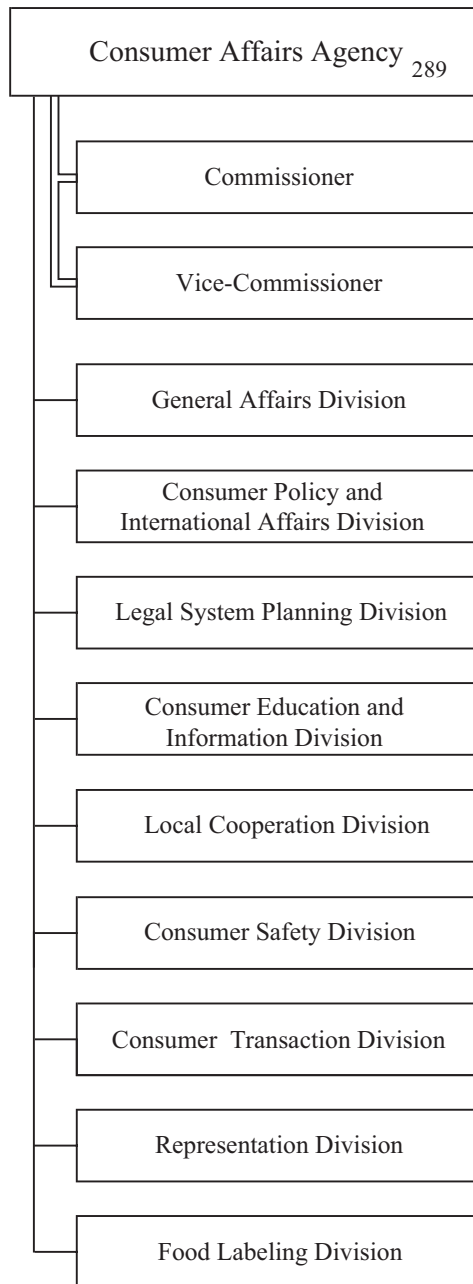


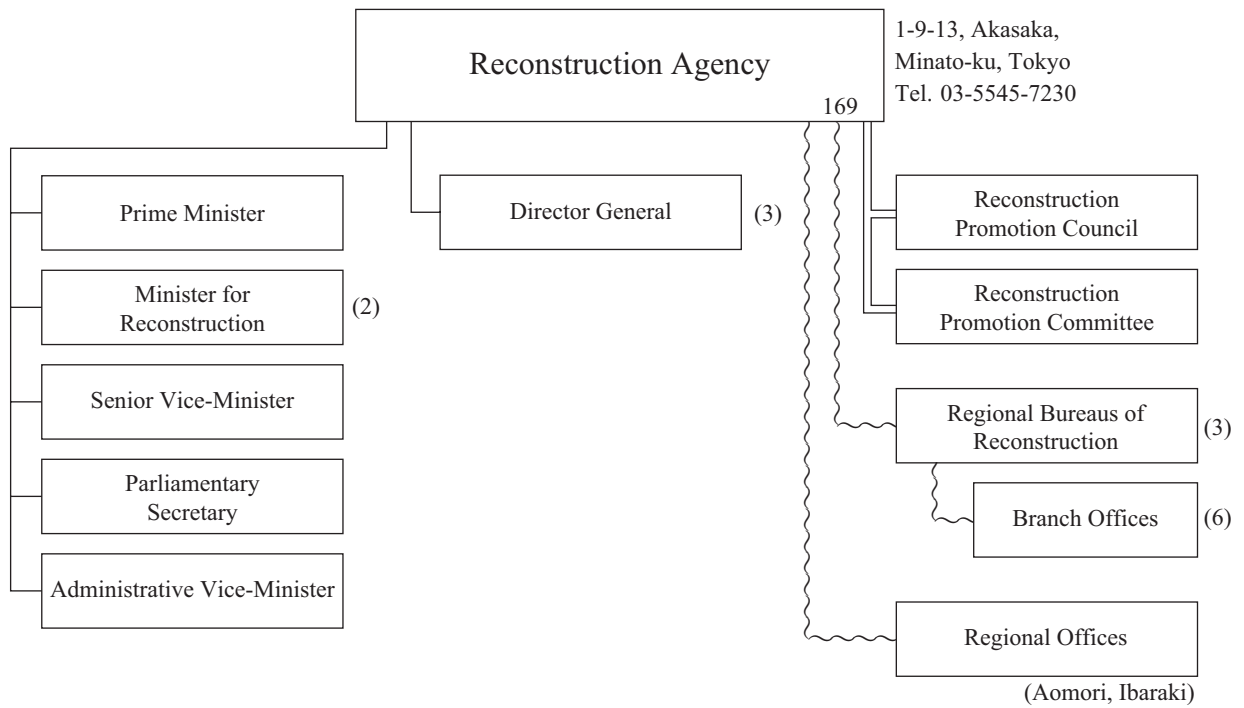
3-2-1, Kasumigaseki, Chiyoda-ku, Tokyo
Tel. 03-3506-6000



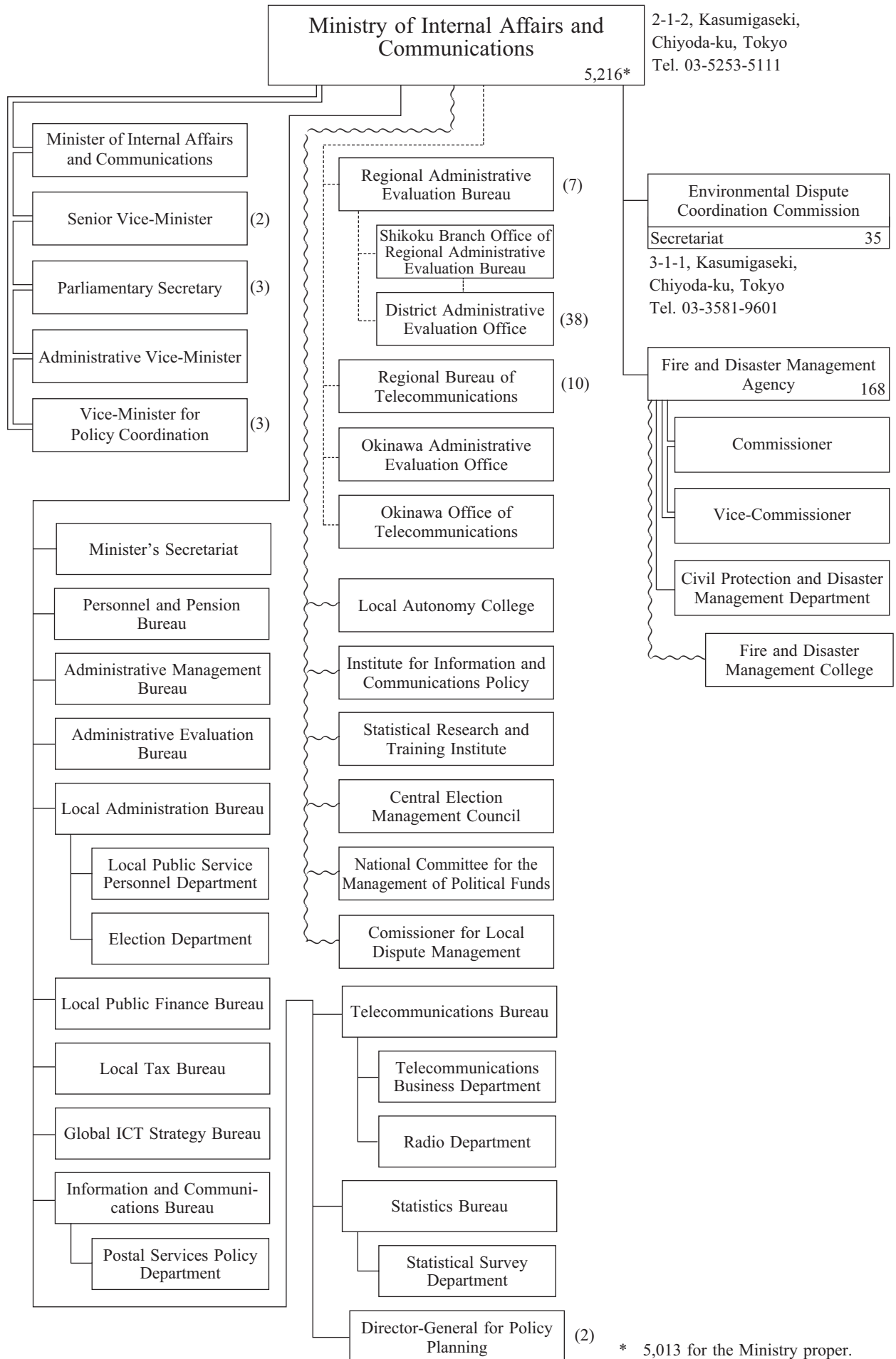
* Matters which the FSA administers are under the control of Minister for Financial Services.

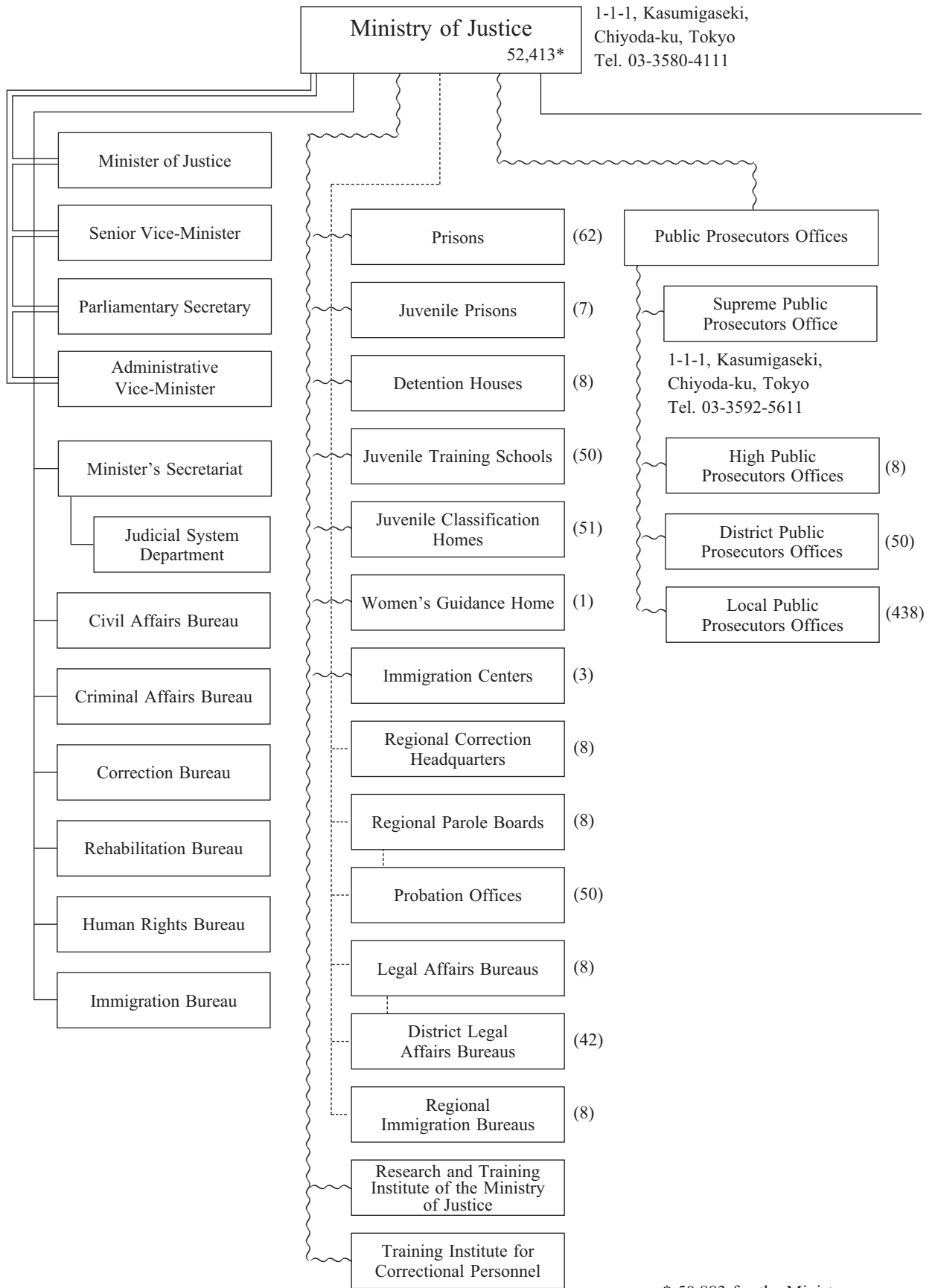
Sanno Park Tower, 2-11-1, Nagatacho, Chiyoda-ku, Tokyo
Tel. 03-3507-8800





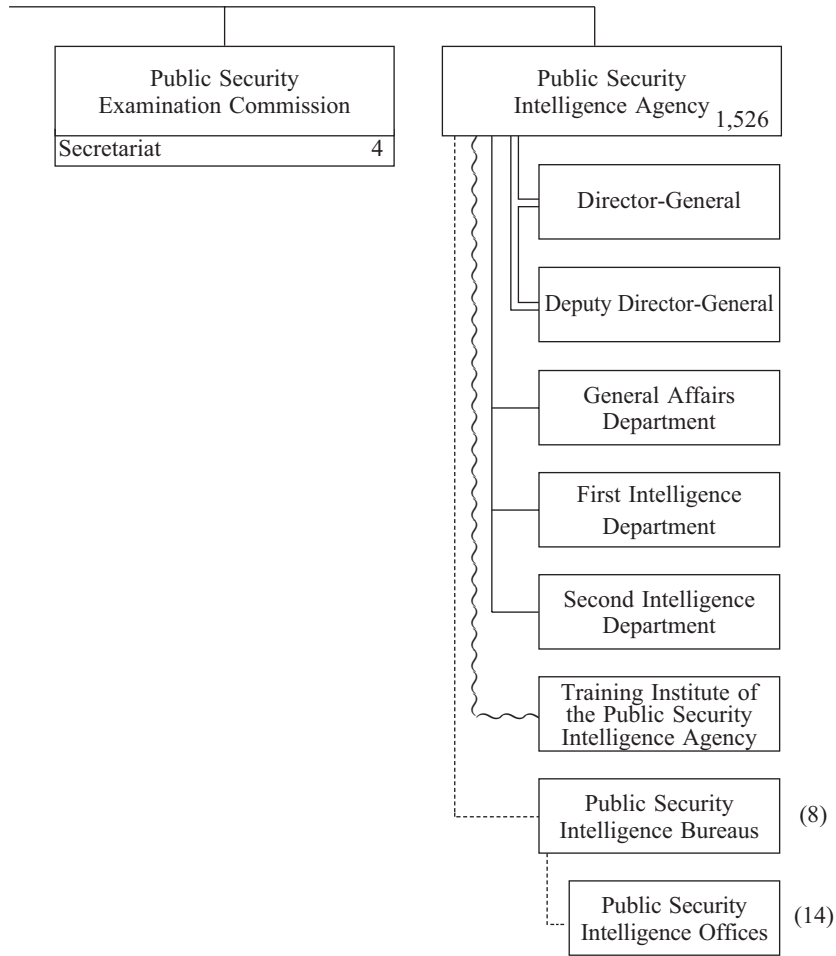
* Nonpermanent Agency, until 31 March, 2022

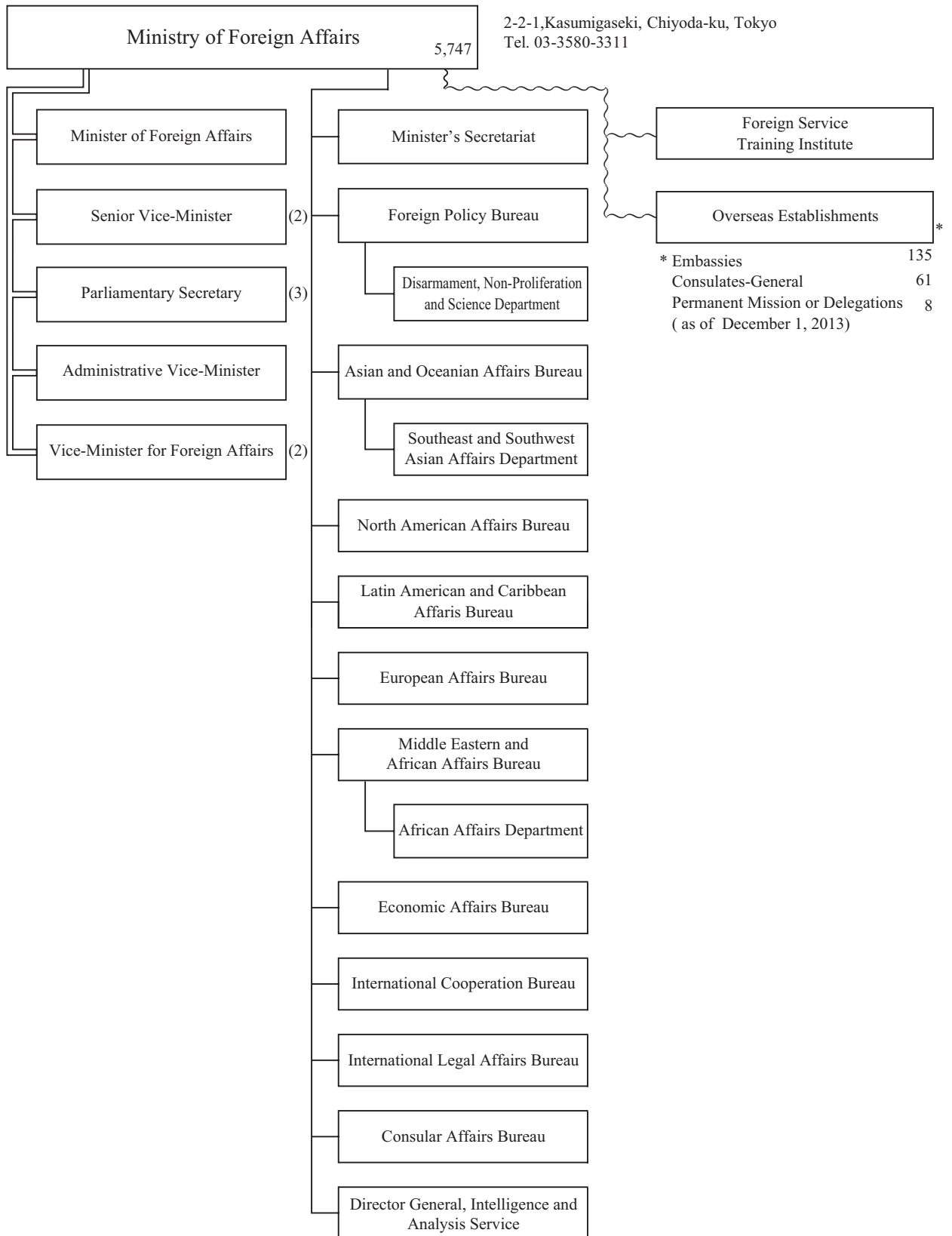


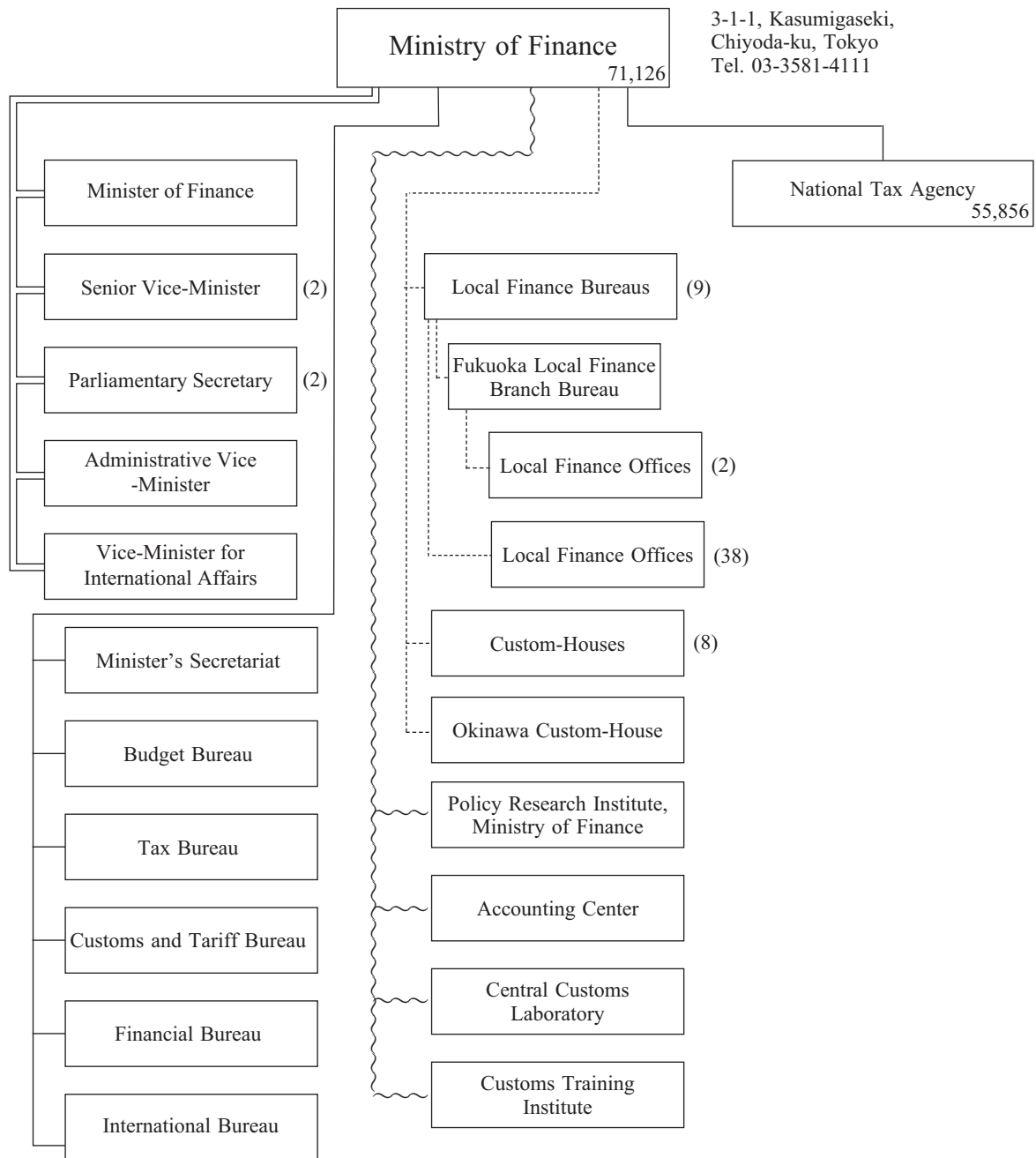


* 50,883 for the Ministry proper.

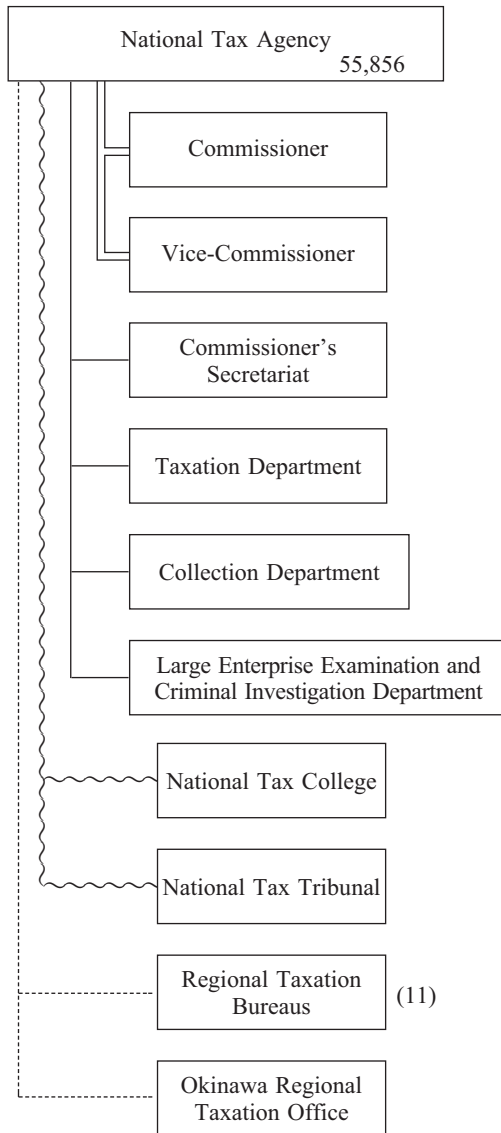
1-1-1, Kasumigaseki,
Chiyoda-ku, Tokyo
Tel. 03-3592-5711





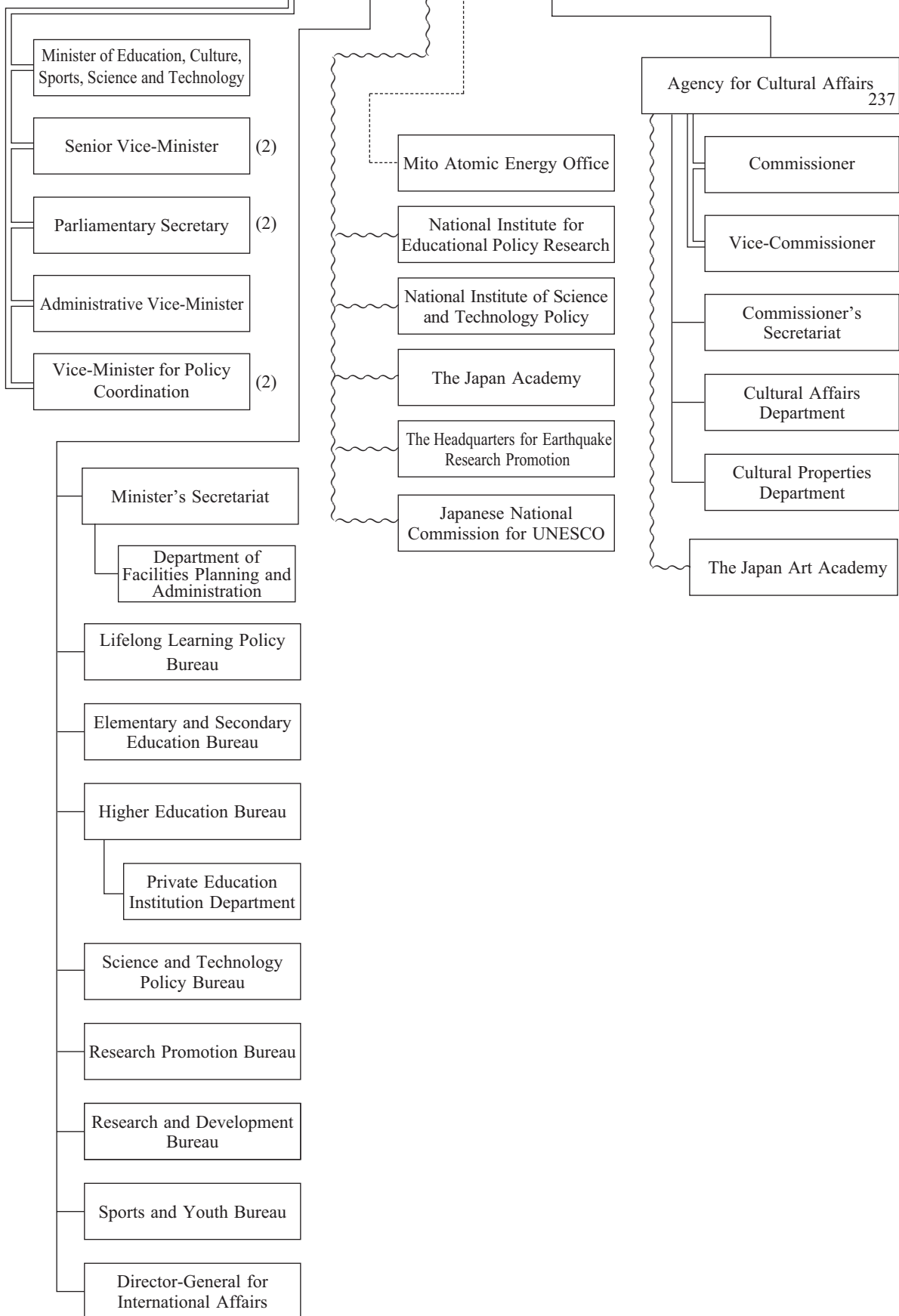


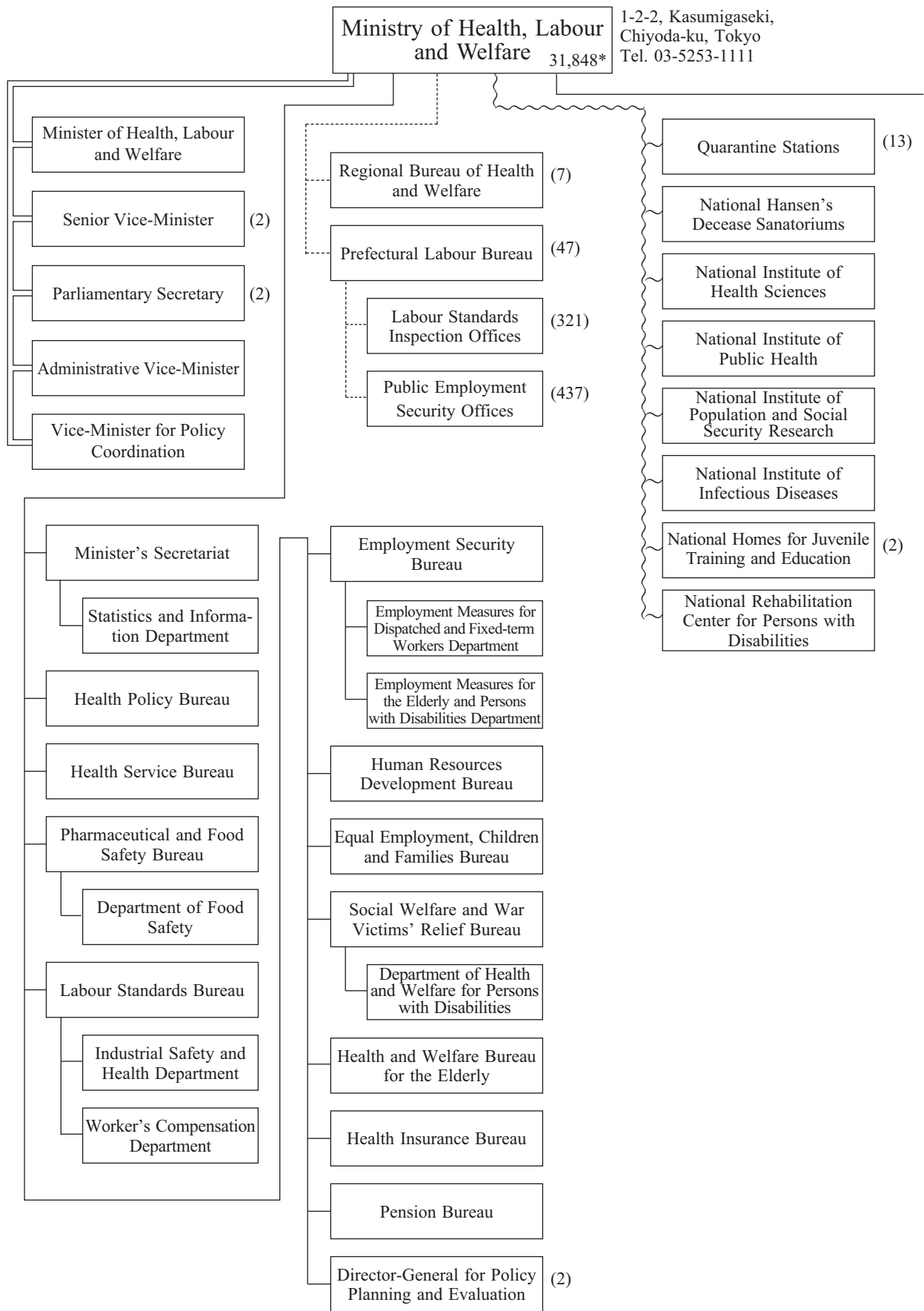
3-1-1, Kasumigaseki,
Chiyoda-ku, Tokyo
Tel. 03-3581-4161



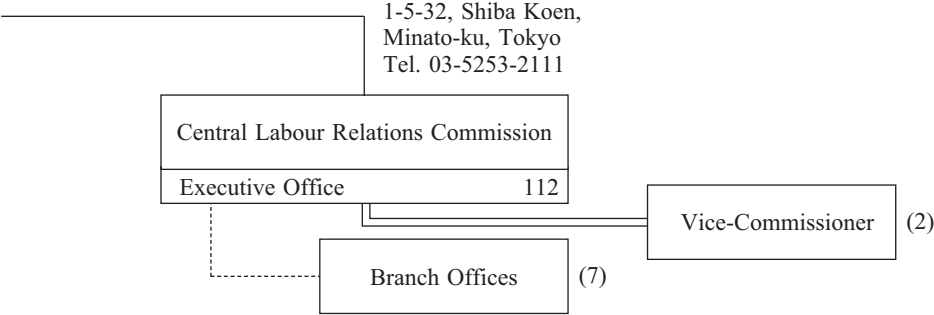
Ministry of Education, Culture,
Sports, Science and Technology
2,190

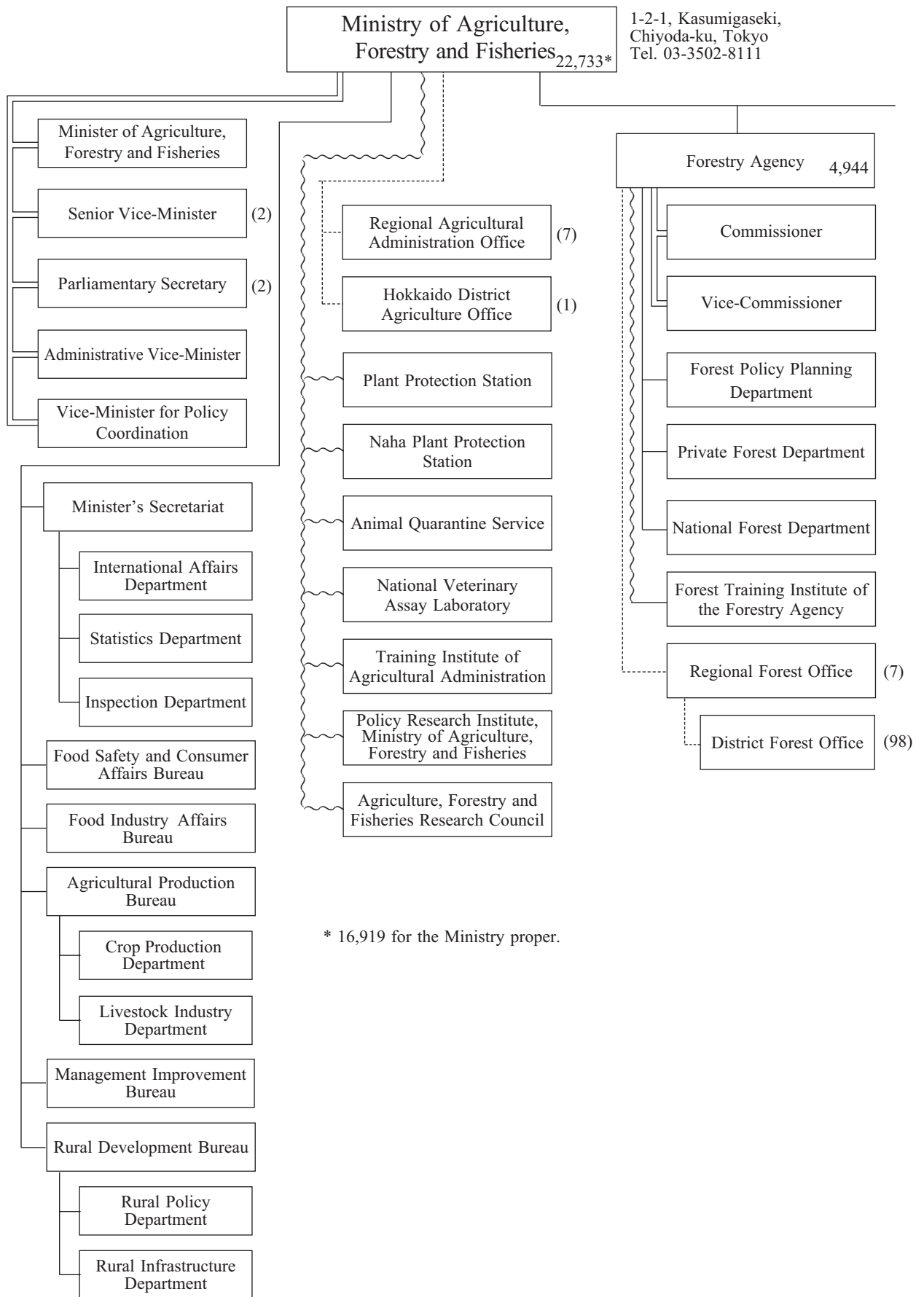
3-2-2, Kasumigaseki,
Chiyoda-ku, Tokyo
Tel. 03-5253-4111

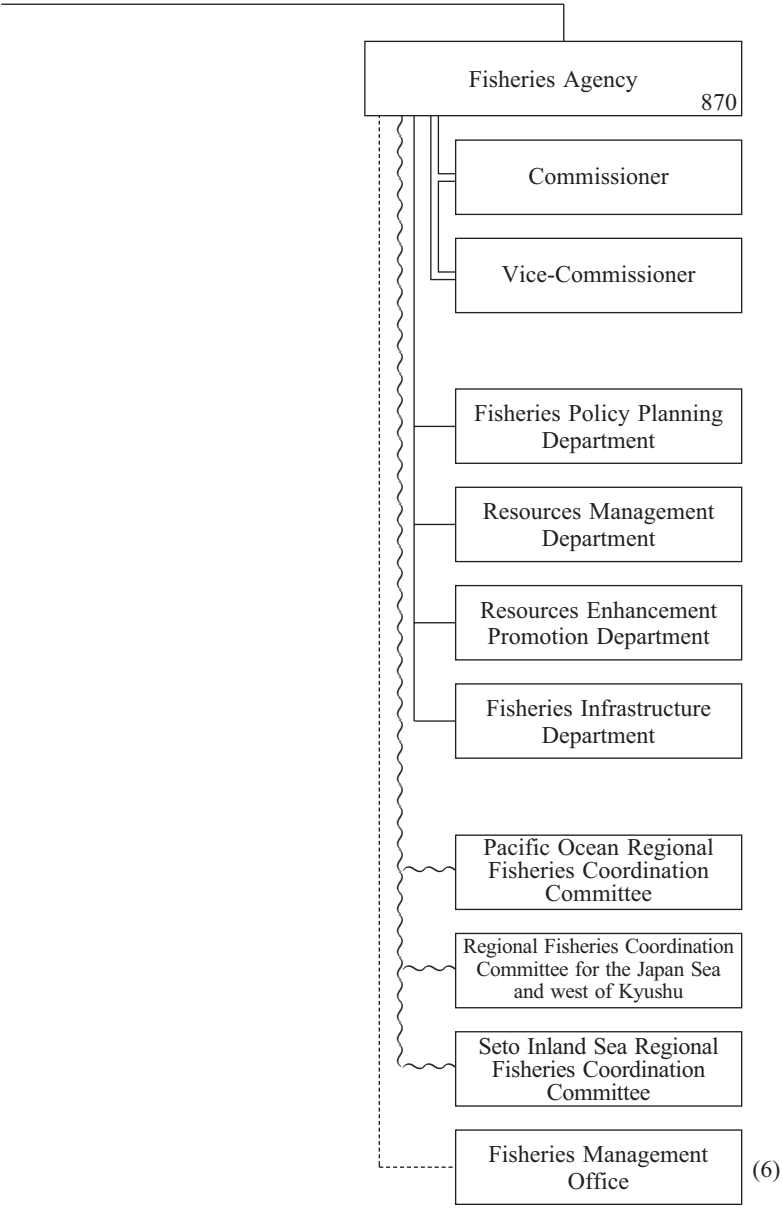


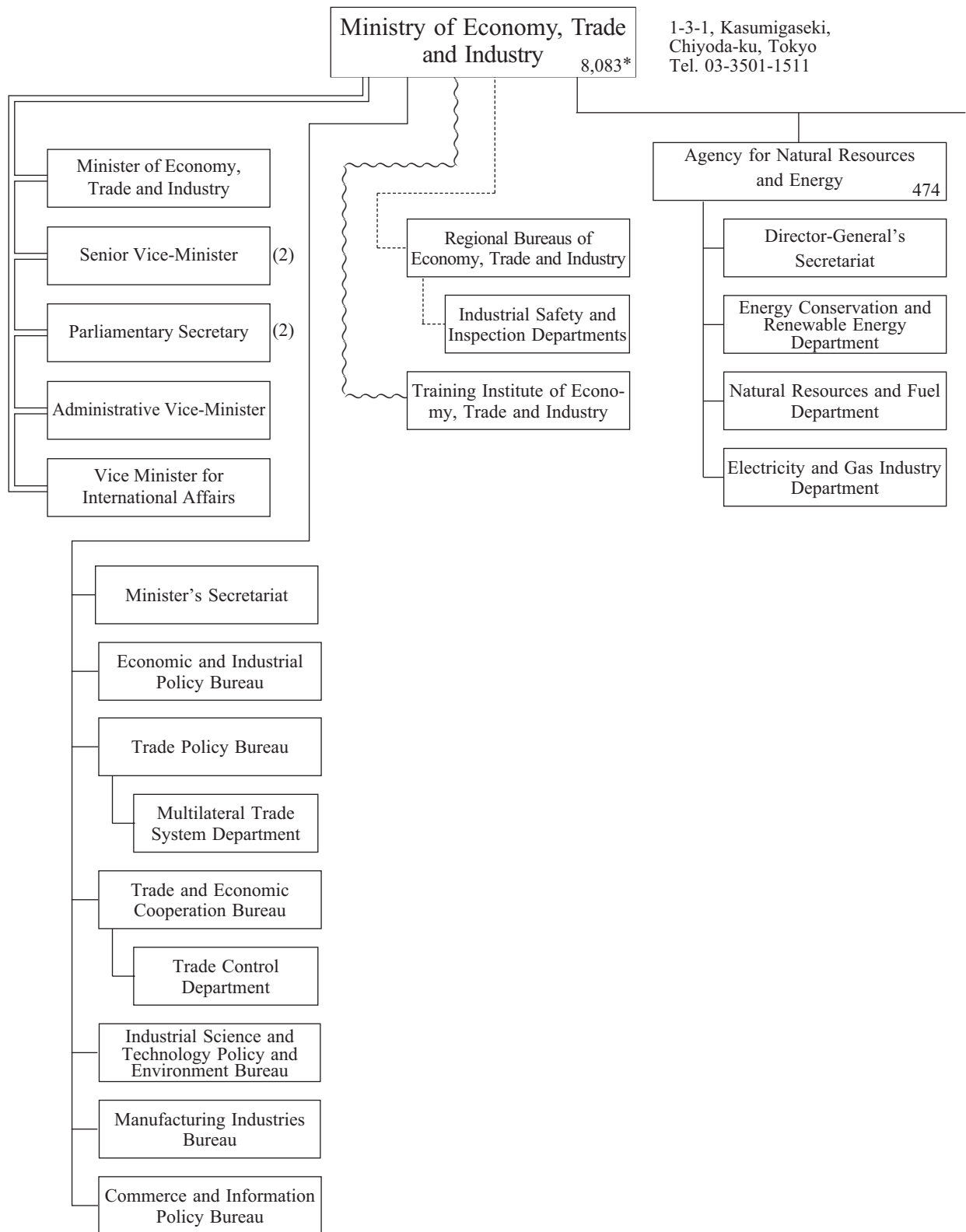


* 31,736 for the Ministry proper.

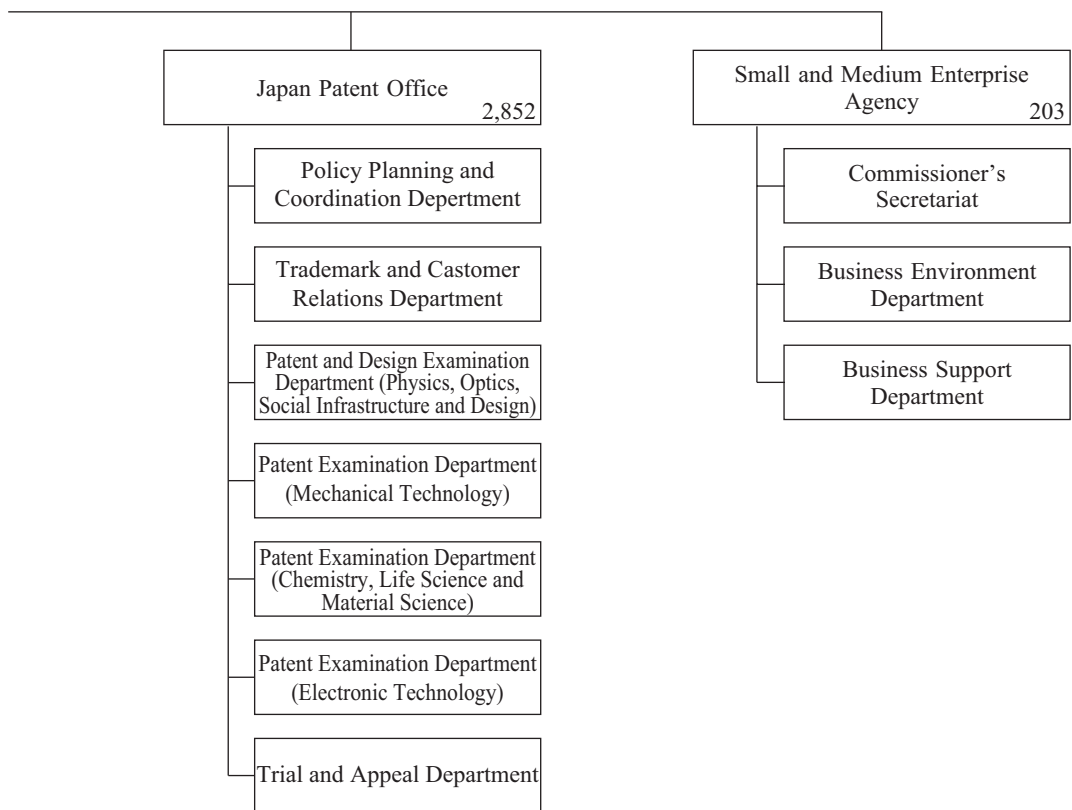






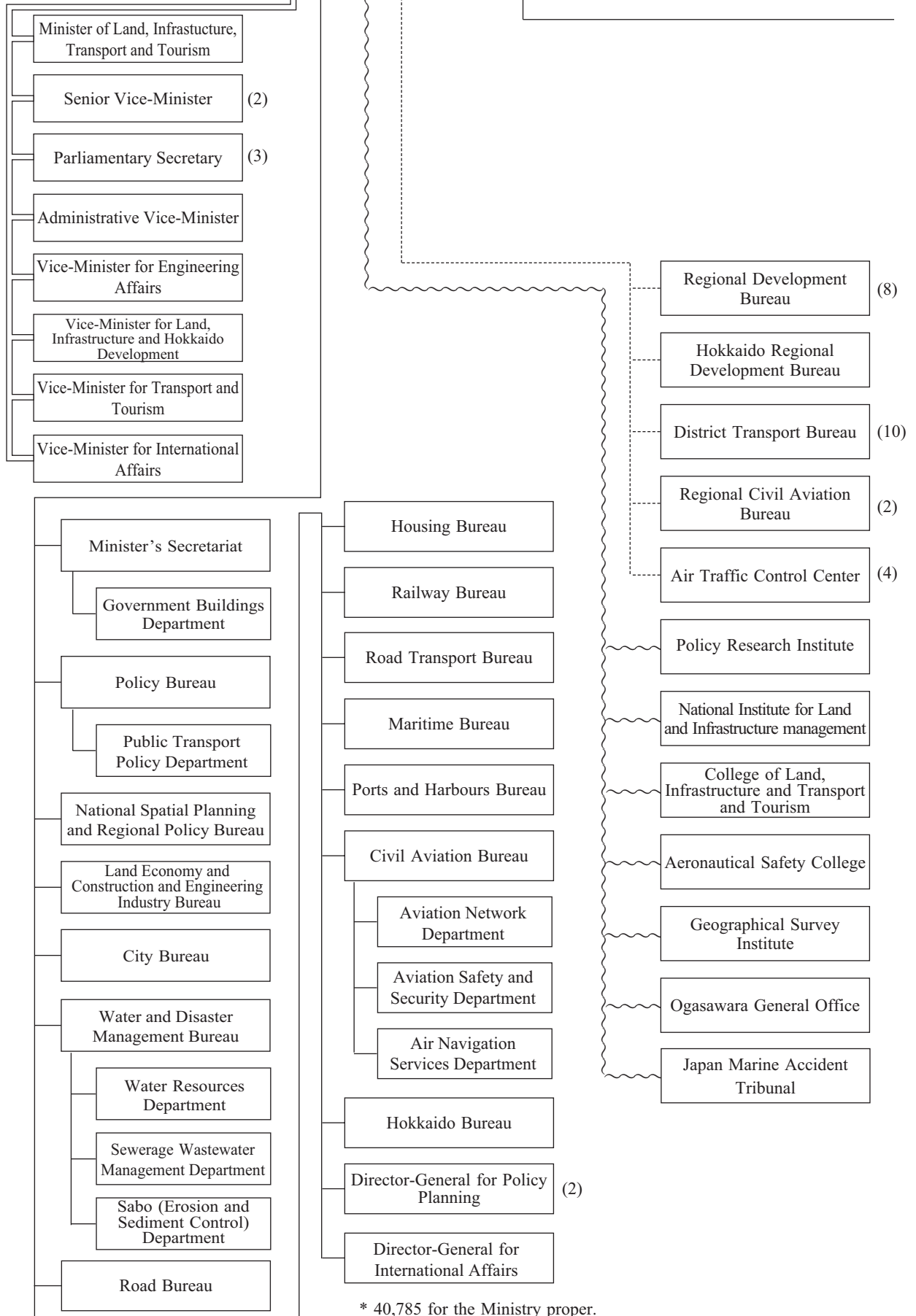


* 4,554 for the Ministry proper.

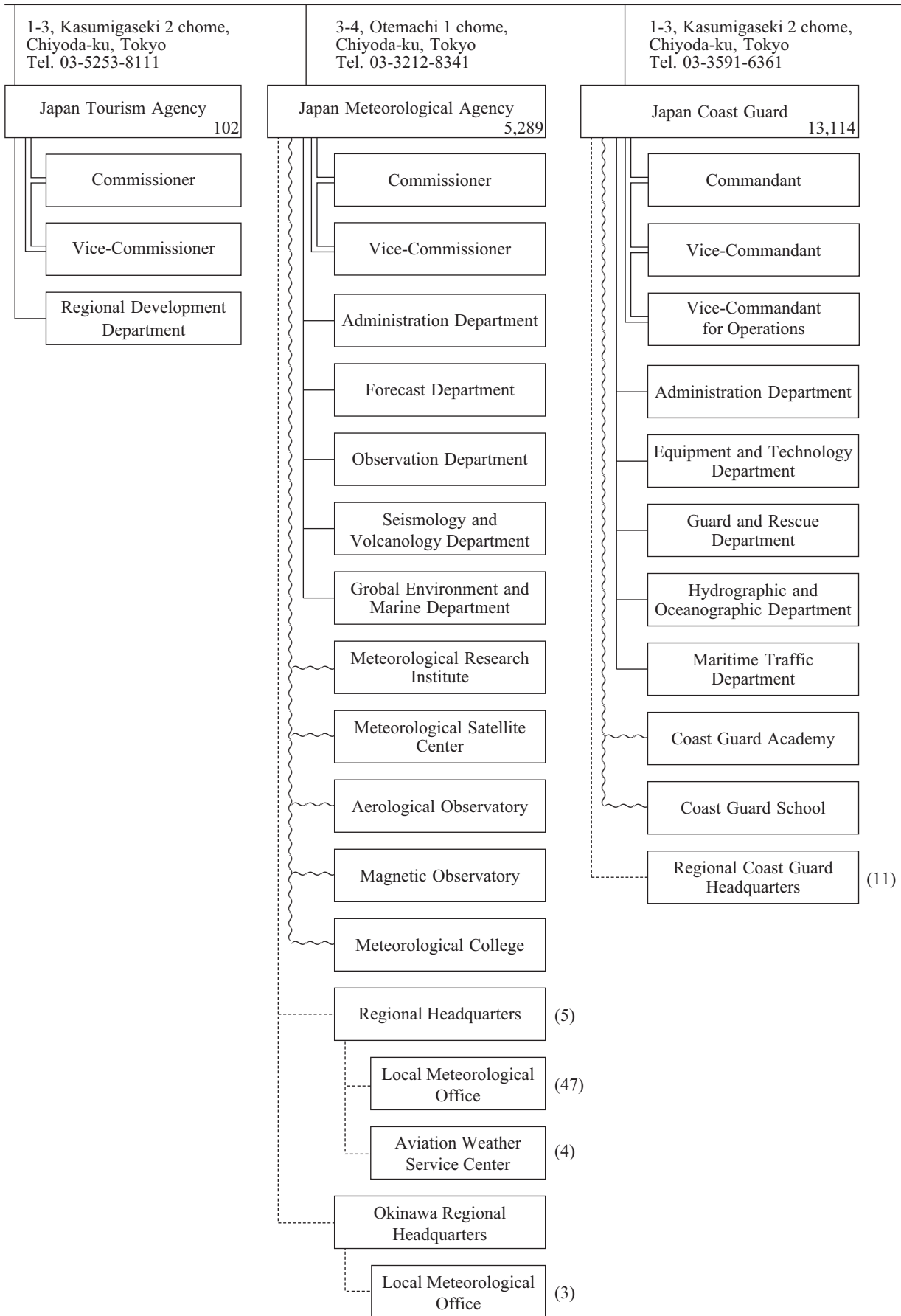


Ministry of Land, Infrastructure,
Transport and Tourism 59,466*

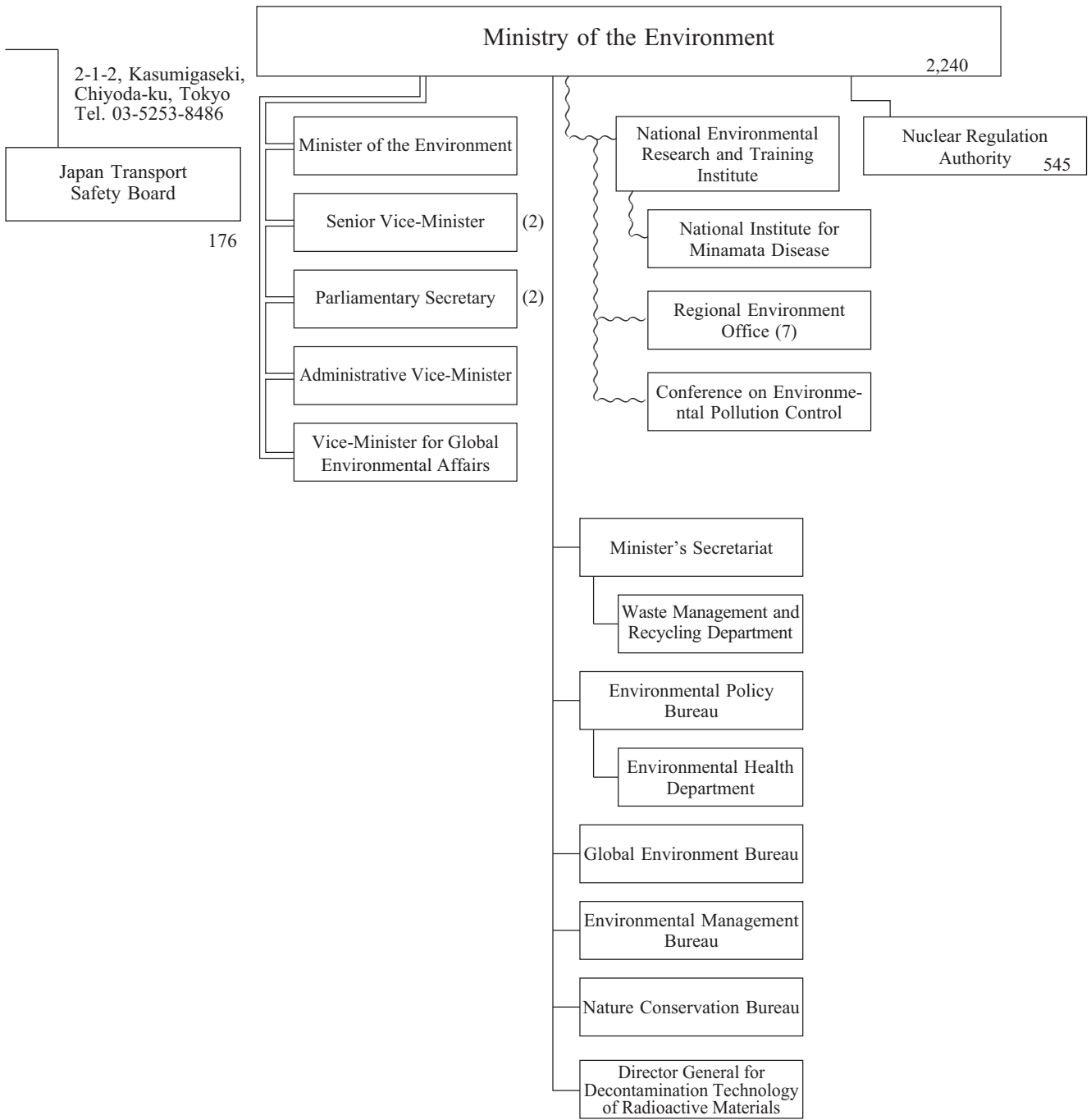
2-1-3, Kasumigaseki,
Chiyoda-ku, Tokyo
Tel. 03-5253-8111

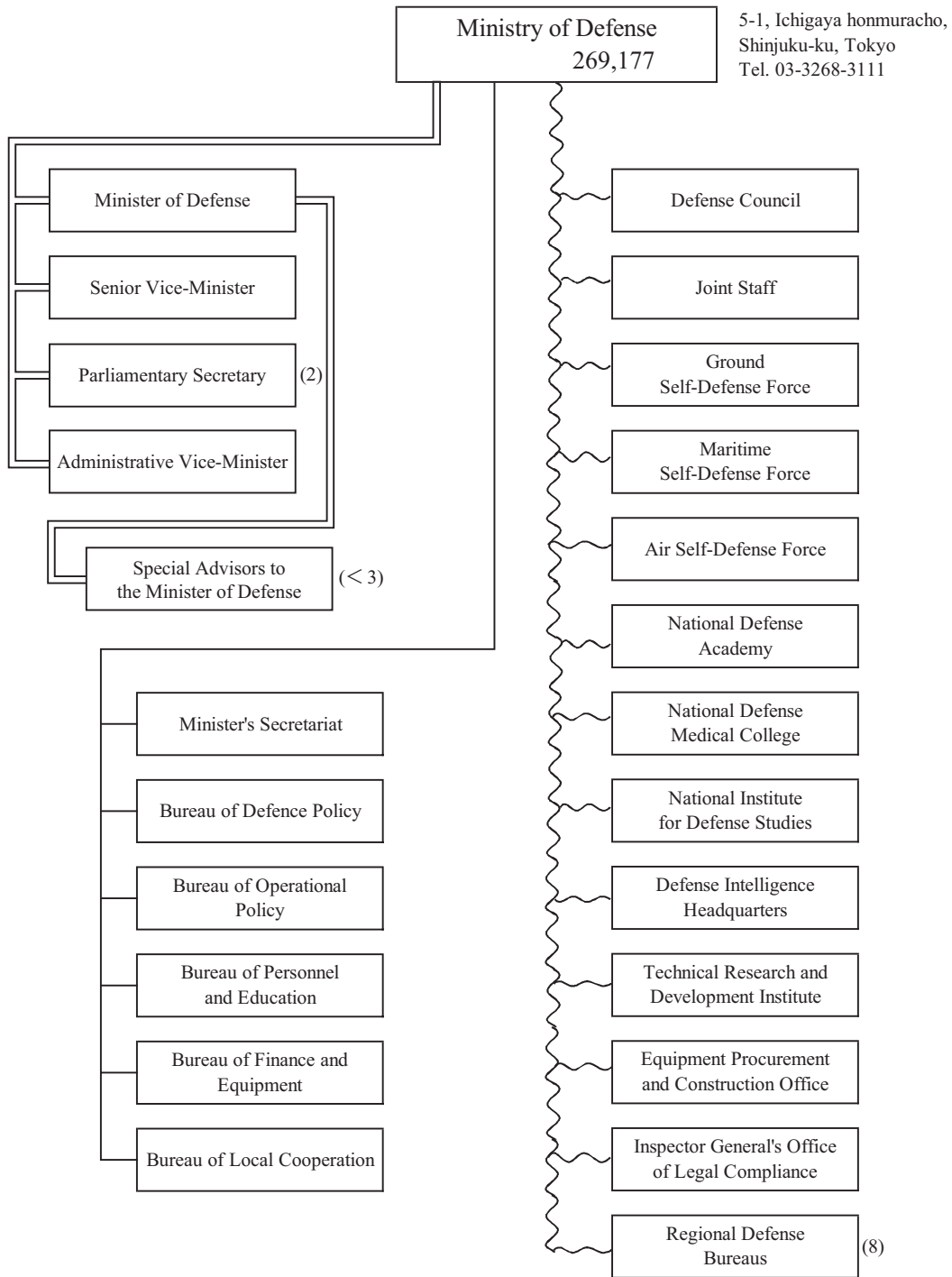


* 40,785 for the Ministry proper.



1-2-2, Kasumigaseki, Chiyoda-ku, Tokyo
Tel. 03-3581-3351





3-2-2, Kasumigaseki, Chiyoda-ku, Tokyo
Tel. 03-3581-3251

